

## CHEMICAL REPORTING & EMERGENCY PLANNING

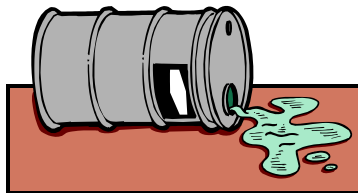
The U.S. Environmental Protection Agency (EPA) has identified specific chemicals, and threshold amounts required to be present at any one time, that require reporting and emergency planning actions.

EPA maintains this list titled: **Title III Consolidated List of Lists** and may be found by searching the EPA web site at <http://www.epa.gov>.

Your Columbia County Local Emergency Planning Committee or chemical supplier is able to help you determine if a chemical you use requires notification.

You may need to complete an Emergency Planning Notification Form if your business has certain chemicals stored overnight or longer at quantities greater than the threshold planning amount.

### BE RESPONSIBLE



**Columbia County Local Emergency Planning Committee (LEPC)**  
711 E. Cook St., P.O. Box 132, Portage, WI 53901  
608-742-4166 Ext. 1309 or Ext. 1308

## REPORTING A CHEMICAL SPILL

A chemical spill is the release of any size or amount of a chemical from its container or intended usage.

The use of the 9-1-1 emergency number is appropriate to summon immediate assistance to protect life and to limit the size of the spill to the environment.

Chemical spills occurring within Columbia County should be reported to the Columbia County LEPC as soon as possible. This can be done through the Emergency Management person on call who can be reached 24 hours a day through the Columbia County Dispatch Center at **608-742-4166** (press #1 for Dispatch).

It is also a requirement to immediately report the spill to the Wisconsin Department of Natural Resources. The DNR maintains a toll free 24/7 phone number of **1-800-943-0003** (press #1 for spill reporting).

This brochure was prepared by the  
**Columbia County Local Emergency Planning Committee (LEPC)**

## *AN OUTREACH BROCHURE FOR OUR BUSINESS PARTNERS*

## *HAZARDOUS AND EXTREMELY HAZARDOUS CHEMICALS*



Photo courtesy of Columbia County Emergency Mgmt.

### **Columbia County Local Emergency Planning Committee (LEPC)**

711 E. Cook St., P.O. Box 132, Portage, WI 53901  
Administrative Phone: 608-742-4166  
Ext. 1309 or Ext. 1308

The Columbia County Local Emergency Planning Committee (LEPC) works with chemical information provided by business's and a number of other sources to help protect emergency responders and the community.

The Columbia County LEPC is made up of local government elected officials; emergency response personnel such as fire, transportation, law enforcement, medical and emergency management; community groups; news media; and representatives from commercial or industrial facilities subject to the emergency planning requirements.

## COLUMBIA COUNTY LOCAL EMERGENCY PLANNING COMMITTEE

The Community Right-to-Know provisions help increase the public's knowledge and access to information on chemical hazards within the community, their uses, and environmental impacts.

The LEPC works with fire, law enforcement, and pre-hospital response organizations to ensure they have the resources, training, and assistance needed to safely address a chemical incident within the community.

### BE KNOWLEDGEABLE



## HAZARDOUS CHEMICALS AROUND YOUR BUSINESS

Using chemicals safely and preventing chemical spills at your place of business is everyone's business.

Business operations frequently use or store a wide range of chemical products.

- Fertilizers
- Herbicides & Pesticides
- Refrigerants
- Fuels like Diesel & Gasoline & Oil
- Paints & Preservatives
- Solvents & Cleaners
- Batteries



Photo courtesy of USDA NRCS.

Chemical hazards are based on the adverse effects to health, safety and the environment.

## EMERGENCY RESPONDERS

Firemen, First Responders, or Law Enforcement officers provide you with immediate help, whenever you have an emergency, wherever you are.

If your emergency is caused by or includes a spilled chemical and Emergency Responders have been called, it is important for them to know that a chemical is involved.

This knowledge serves to protect their health and better administer aid to you.

## WHAT IF I FORGET TO REPORT AND/OR PLAN?

Failure to meet SARA / EPCRA (Superfund Amendments Reauthorization Act / Emergency Planning Community Right-to-Know Act) requirements could result in some substantial fines.



Please feel free to contact the LEPC by phone at 608-742-4166 or write us at 711 E. Cook St., P.O. Box 132, Portage, WI 53901, if you have questions, concerns, or are seeking information related to chemical issues within Columbia County.

### BE READY