

COLUMBIA COUNTY COVID-19 WEEKLY UPDATE

AS OF NOVEMBER 17, 2021:

COVID-19 DATA SUMMARY

7,882 (+ 141 from 11/11/21)

TOTAL CONFIRMED POSITIVE TEST RESULTS
(Includes active, recovered, deceased)

456 (+ 10 from 11/11/21)

TOTAL EVER HOSPITALIZED

612 (+ 6 from 11/11/21)

TOTAL PROBABLE TEST RESULTS

356 (+20 from 11/11/21)

ACTIVE CASES

72 (+ 1 from 11/11/21)

TOTAL DEATHS OF PEOPLE
CONFIRMED POSITIVE

13 (+ 0 from 11/11/21)

TOTAL DEATHS OF PEOPLE
PROBABLE RESULTS

7,452 (+ 120 from 11/11/21)

INDIVIDUALS RECOVERED

35 (-7 from 11/11/21)

TOTAL NUMBER OF ACTIVE INVESTIGATIONS BY SETTING

Educational facility- 22; Long-term care facility- 8; Workplace
(non-health care)-4; Group housing facility- 0; Health care facility- 1;
Other setting- 0

COVID-19 ACTIVITY LEVEL:

VERY HIGH

COVID-19 PERCENT POSITIVE:

MEDIUM

LEVEL OF COMMUNITY TRANSMISSION:

HIGH

AGE GROUPS TESTING POSITIVE



17.8% < 18 years old- 1,401 persons

14.7% 45-54 years old- 1,156 persons

10.0% 18-24 years old- 788 persons

13.3% 55-64 years old- 1,045 persons

16.1% 25-34 years old- 1,268 persons

12.6% 65+ years old- 993 persons

15.6% 35-44 years old- 1,231 persons

COLUMBIA COUNTY COVID-19 WEEKLY UPDATE

AS OF NOVEMBER 5, 2021:

COVID-19 VACCINE DATA SUMMARY

**COLUMBIA COUNTY
RESIDENTS WHO HAVE
BEEN FULLY VACCINATED**

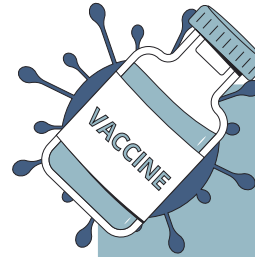
33,979
59.1%

**COLUMBIA COUNTY RESIDENTS
WHO HAVE RECEIVED AT
LEAST ONE DOSE**

35,638
61.9%

**TOTAL VACCINE DOSES
FOR COLUMBIA COUNTY**

67,549



VaccineFinder

The Wisconsin Department of Health Services (DHS) is using VaccineFinder to help people more easily locate available vaccine providers who are open to the public

[Vaccines.gov](https://www.vaccines.gov)

AGE GROUPS FULLY VACCINATED FOR COVID-19

50.2% 12-15 years old- 1,462 persons

61.1% 35-44 years old- 4,417 persons

53.7% 16-17 years old- 786 persons

65.7% 45-54 years old- 5,054 persons

58.5% 18-24 years old- 2,475 persons

76.9% 55-64 years old- 6,774 persons

52.5% 25-34 years old- 3,621 persons

88.8% 65+ years old- 9,389 persons

**FOR MORE STATEWIDE VACCINE DATA,
PLEASE VISIT THE [DHS WEBSITE](https://www.dhs.gov).**

Columbia County Health & Human Services is working with the State of Wisconsin, and our community partners, to receive the COVID vaccine. Please check out our website for a list of our community partners that are currently vaccinating eligible individuals and for information about Columbia County Health and Human Services vaccine clinics.

<https://bit.ly/cocolvaccineresources>

COLUMBIA COUNTY COVID-19 WEEKLY UPDATE

AS OF NOVEMBER 17, 2021:

WISCONSIN DATA SUMMARY



WISCONSIN COVID-19 Update

November 17, 2021
2:00 p.m.

Disease
Activity
Level by
Number of
Counties

Critically
High

8

Very High

62

High

2

Medium

0

7-Day Averages

2,963 New Confirmed Cases

482 New Probable Cases

15 New Reported Deaths

Percent Positive
by Test

10.8%

Vaccines Administered *11/5

58.1% At Least One Dose

55.1% Complete Series



Get Vaccinated



Mask Up



Stay 6' Apart



Wash Hands

Please take steps to protect yourself and others:
dhs.wisconsin.gov/covid-19/community.htm