



Reminder

Prenatal Care Coordination does not replace your regular check-ups with your doctor or nurse-midwife, but rather gives you more time, information, and resources to prepare you for your new baby.

The mission of Columbia County Health and Human Service is to promote and protect the health and safety of our community.



608-742-9751



div.of.health
@columbiacountywi.gov



111 East Mullett St
Portage, WI 53901



Monday-Friday
8:00am-4:30pm



PREVENT • PROTECT • PROMOTE

Prenatal Care Coordination

Columbia County
Public Health

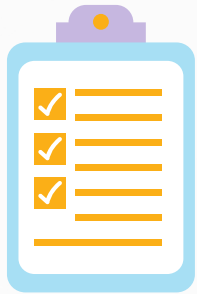
Planning for a healthy
pregnancy, birth, and beyond



What is Prenatal Care Coordination?

Prenatal Care Coordination (PNCC) is a BadgerCare Plus and Medicaid benefit that helps pregnant women have support and services throughout pregnancy and up to two months after birth. There is no cost to you for this service.

Every pregnancy can benefit from help with planning, getting ready for a new baby, and the lifestyle changes that occur.



Why do we offer this program?

Healthy moms have healthier babies, and we want all babies in Columbia County to have the best start in life. Every pregnancy is unique. Even if you have been pregnant before this program can still be helpful to you.

What can I expect?

- Monthly nurse visits in your home or our clinic
- Non-judgmental support tailored to your needs
- Information about pregnancy, labor and delivery, and parenthood
- Assistance finding resources for housing, nutrition, smoking cessation, and more
- Participation in a rewards program to earn items for you and your baby
- HealthChecks for your child from birth to 18 years
- Support with breastfeeding
- Development towards your personal goals



How do I know if I qualify?

A nurse will meet with you and ask you some questions to see if you meet eligibility requirements.

How to Enroll

If Living in Columbia County
call: (608) 742 - 9227

If not living in Columbia County
call the following numbers
below:

The Well Badger Resource
Center: 1.800.642.7838

Medicaid Member Services:
1.800.362.3002

Medical providers may also
refer pregnant woman for
PNCC services