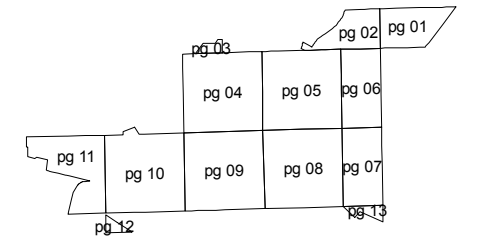
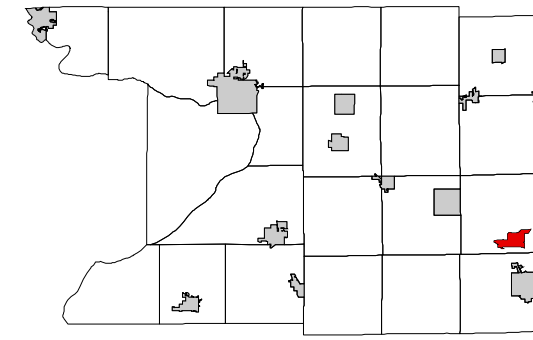
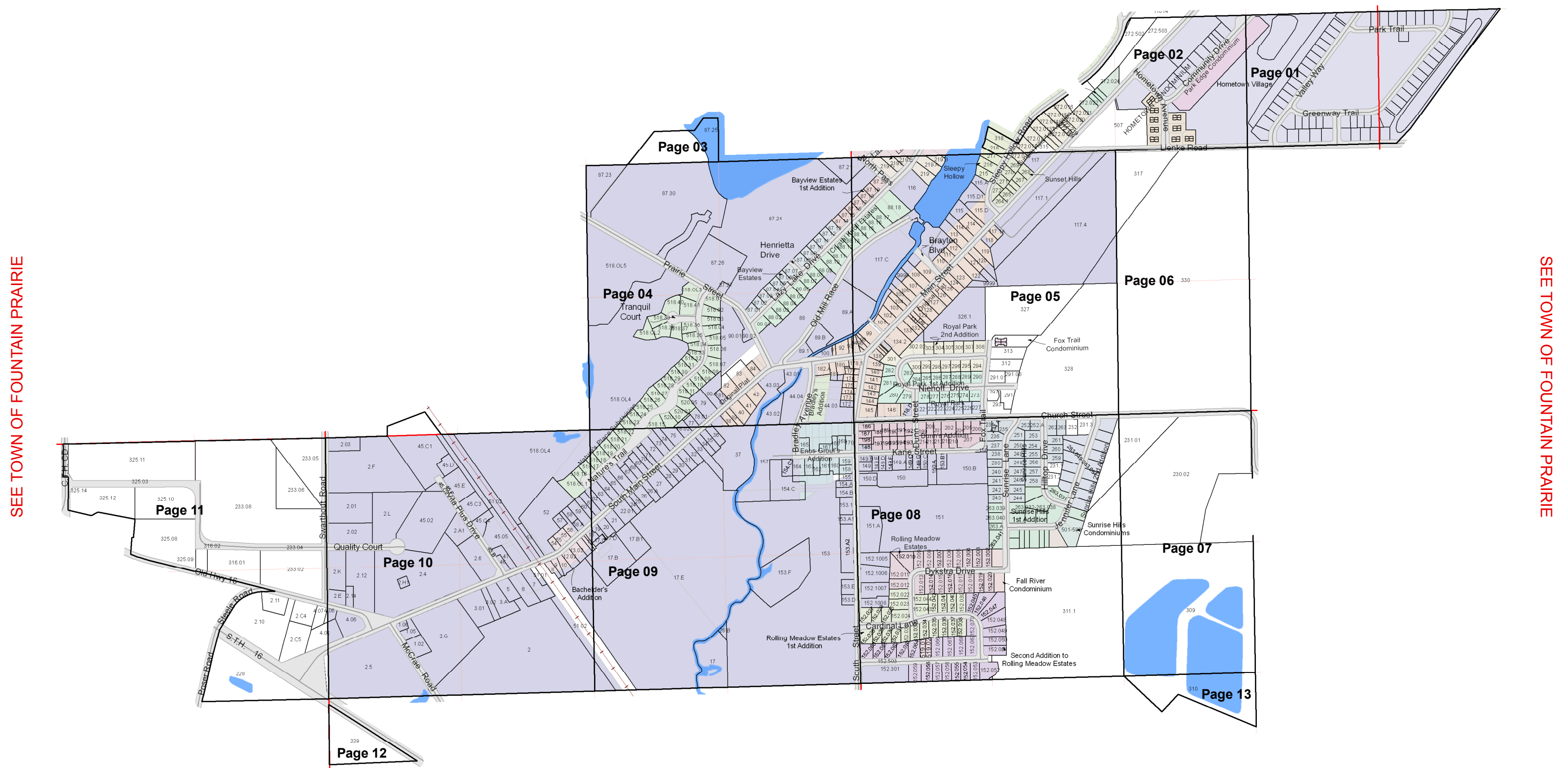


VILLAGE OF FALL RIVER
T11N R12E



SEE TOWN OF FOUNTAIN PRAIRIE



January 25, 2010
Columbia County Land Information

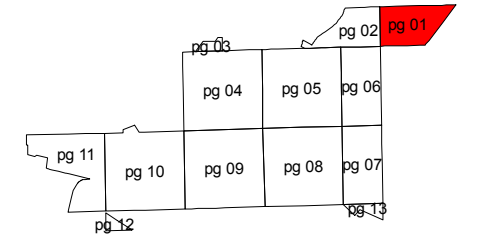
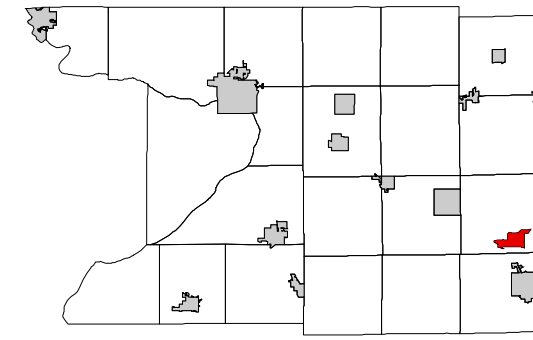
SEE TOWN OF FOUNTAIN PRAIRIE

VILLAGE OF FALL RIVER
T11N R12E

VILLAGE OF FALL RIVER

T 1 1 N R 1 2 E

1 inch = 200 feet 1:2,400



SEE TOWN OF FOUNTAIN PRAIRIE



SEE VILLAGE OF FALL RIVER - Page 02

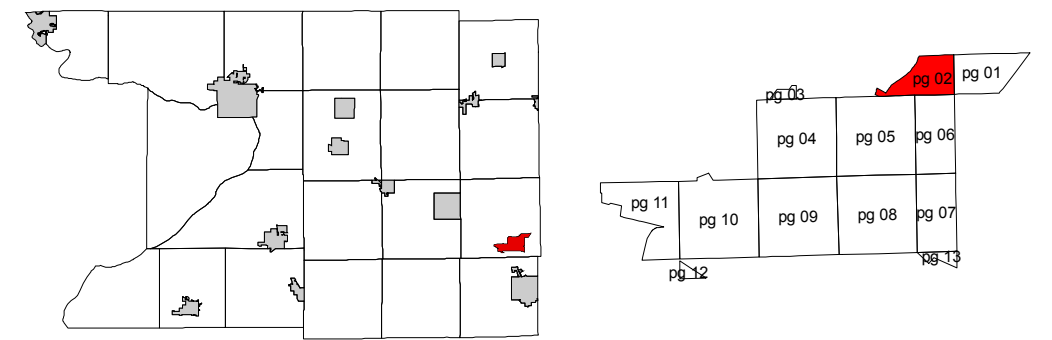
SEE TOWN OF MOUNTAIN PRAIRIE

SEE TOWN OF FOUNTAIN PRAIRIE

VILLAGE OF FALL RIVER

T 1 1 N R 1 2 E

1 inch = 200 feet 1:2,400



SEE TOWN OF FOUNTAIN PRAIRIE



SEE TOWN OF FOUNTAIN PRAIRIE

SEE VII | AGE OF FAI | RIVER - Page 01

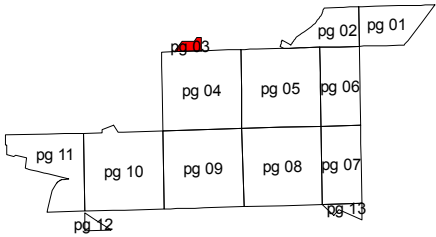
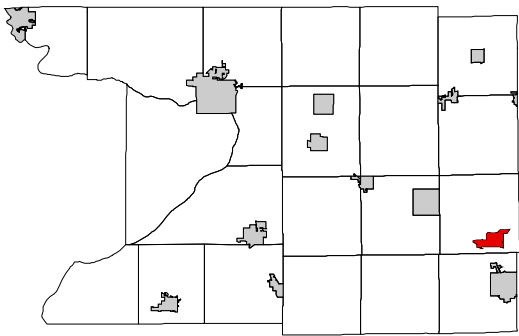
SEE VILLAGE OF FALL RIVER - Page 05

VILLAGE OF FALL RIVER

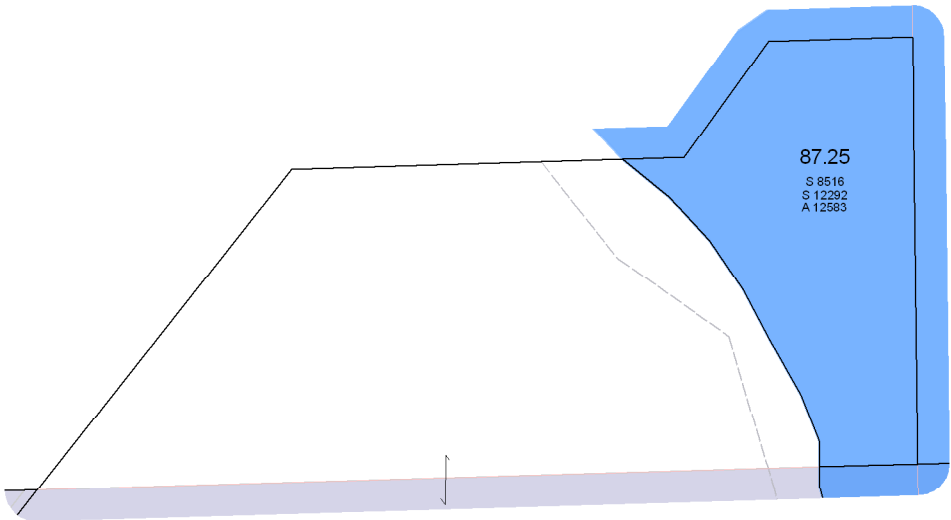
T11N R12E

1 inch = 200 feet 1:2,400

SEE TOWN OF FOUNTAIN PRAIRIE



SEE TOWN OF FOUNTAIN PRAIRIE



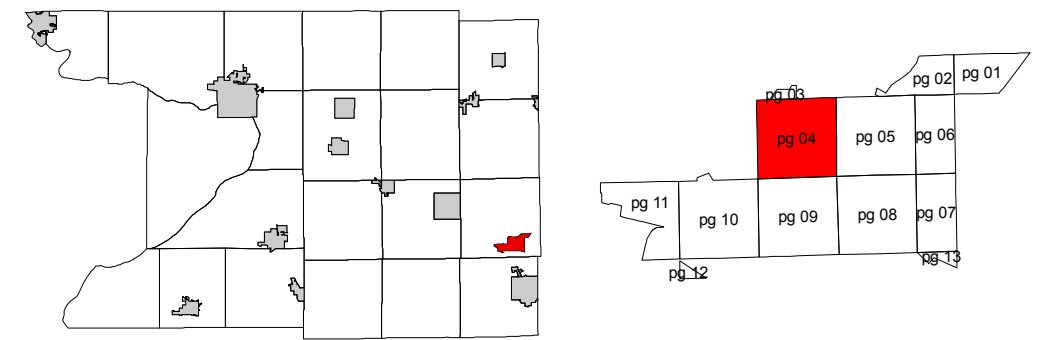
SEE TOWN OF FOUNTAIN PRAIRIE

SEE VILLAGE OF FALL RIVER - Page 04

VILLAGE OF FALL RIVER

T 11 N R 12 E

1 inch = 200 feet 1:2,400



SEE TOWN OF FOUNTAIN PRAIRIE



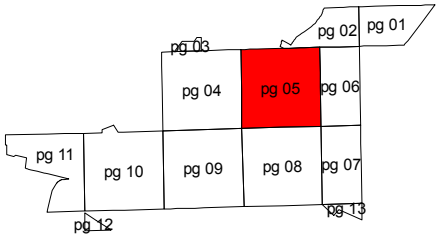
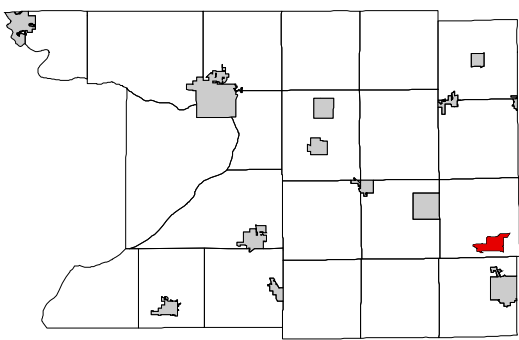
SEE VII | AGE OF FAI | RIVER - Page 05

SEE VILLAGE OF FALL RIVER - Page 09

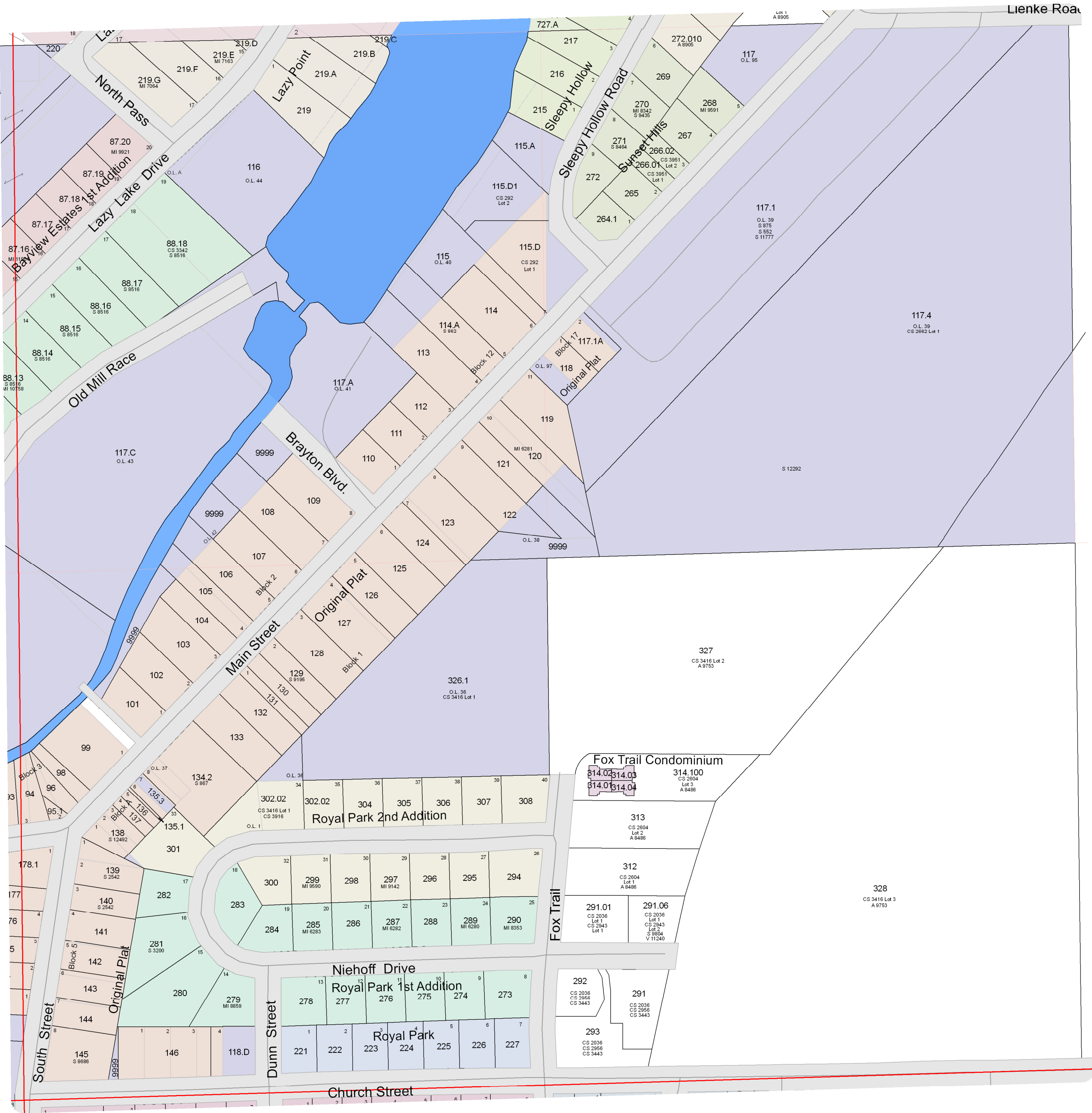
VILLAGE OF FALL RIVER

T11N R12E

1 inch = 200 feet 1:2,400



SEE VILLAGE OF FALL RIVER - Page 02



SEE VILLAGE OF FALL RIVER - Page 04

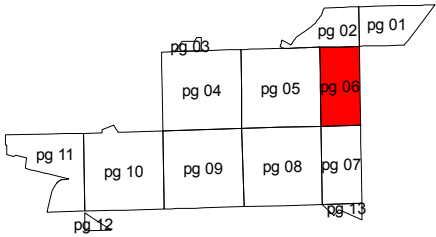
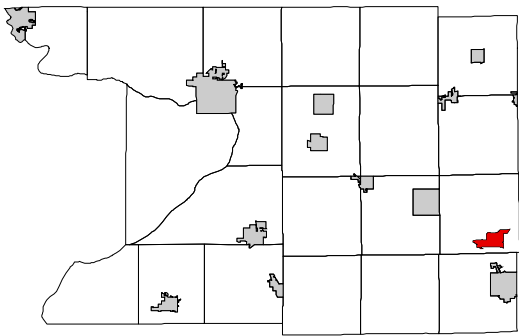
SEE VILLAGE OF FALL RIVER - Page 06

SEE VILLAGE OF FALL RIVER - Page 08

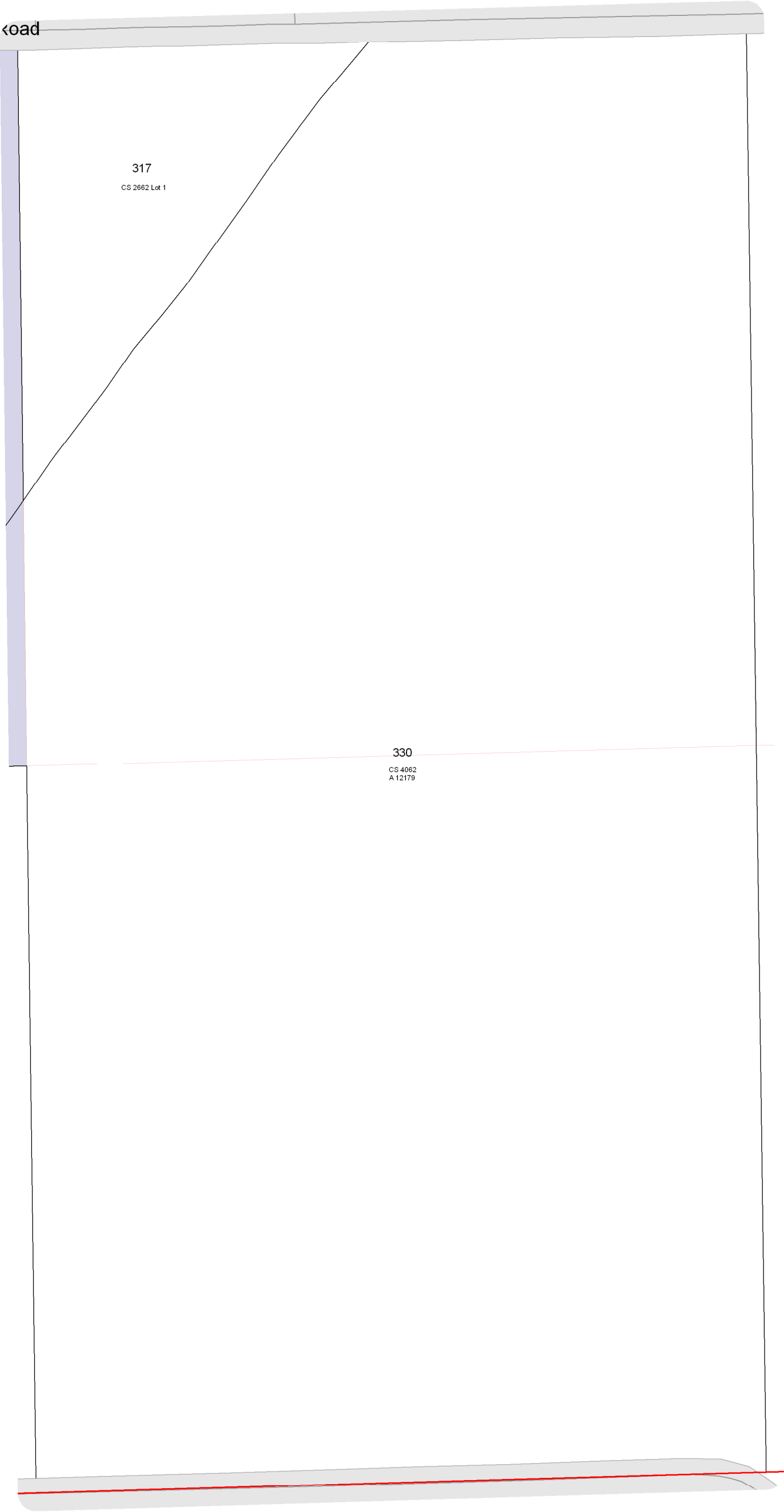
VILLAGE OF FALL RIVER

T11N R12E

1 inch = 200 feet 1:2,400



SEE VILLAGE OF FALL RIVER - Page 02



SEE VILLAGE OF FALL RIVER - Page 05

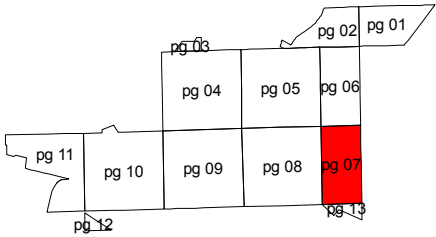
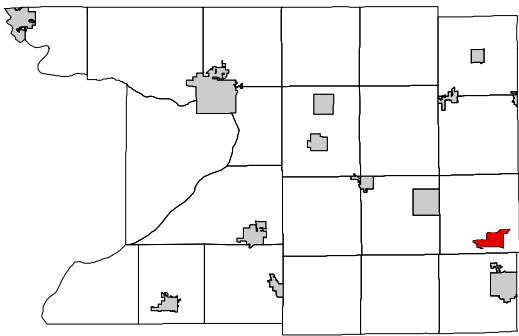
SEE TOWN OF FOUNTAIN PRAIRIE

SEE VILLAGE OF FALL RIVER - Page 07

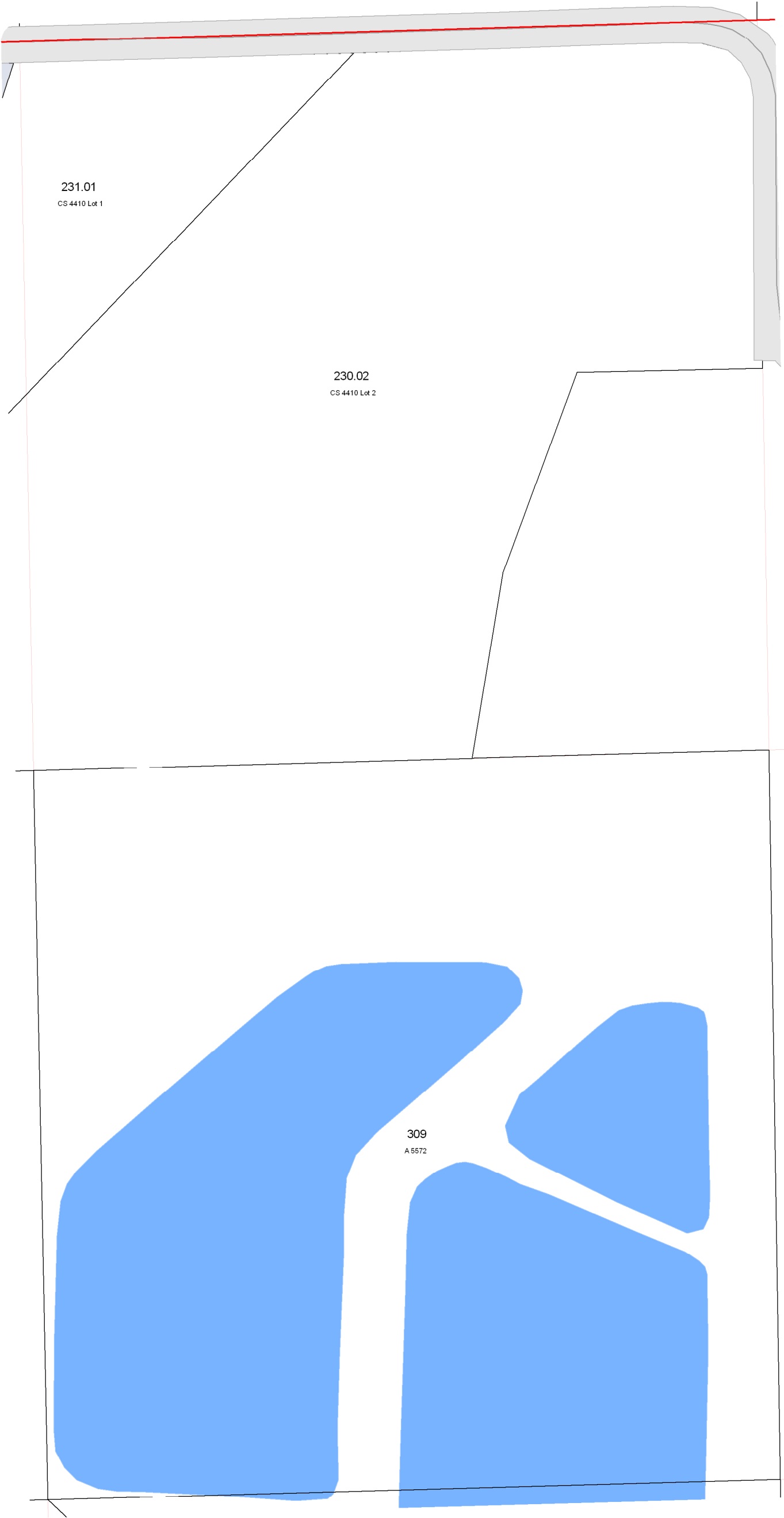
VILLAGE OF FALL RIVER

T11N R12E

1 inch = 200 feet 1:2,400



SEE VILLAGE OF FALL RIVER - Page 06



SEE VILLAGE OF FALL RIVER - Page 08

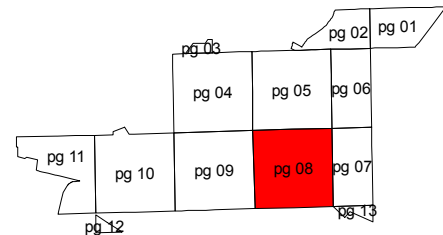
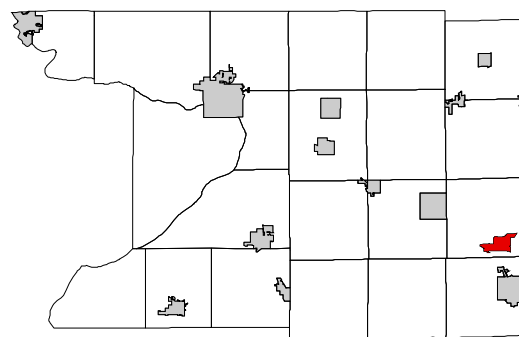
SEE TOWN OF FOUNTAIN PRAIRIE

SEE VILLAGE OF FALL RIVER - Page 13

VILLAGE OF FALL RIVER

T11N R12E

1 inch = 200 feet 1:2,400



SEE VILLAGE OF FALL RIVER - Page 05



SEE VILLAGE OF FALL RIVER - Page 09

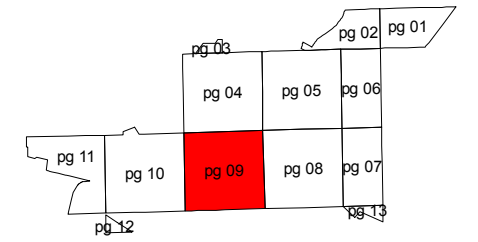
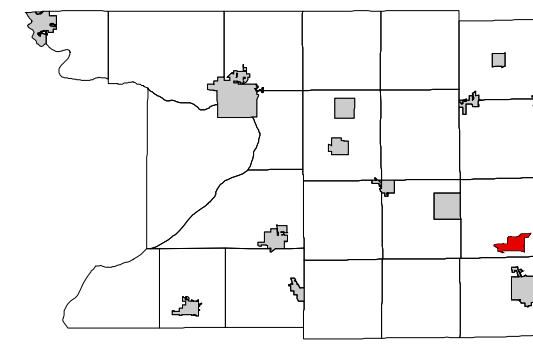
SEE VILLAGE OF FALL RIVER - Page 07

SEE TOWN OF FOUNTAIN PRAIRIE

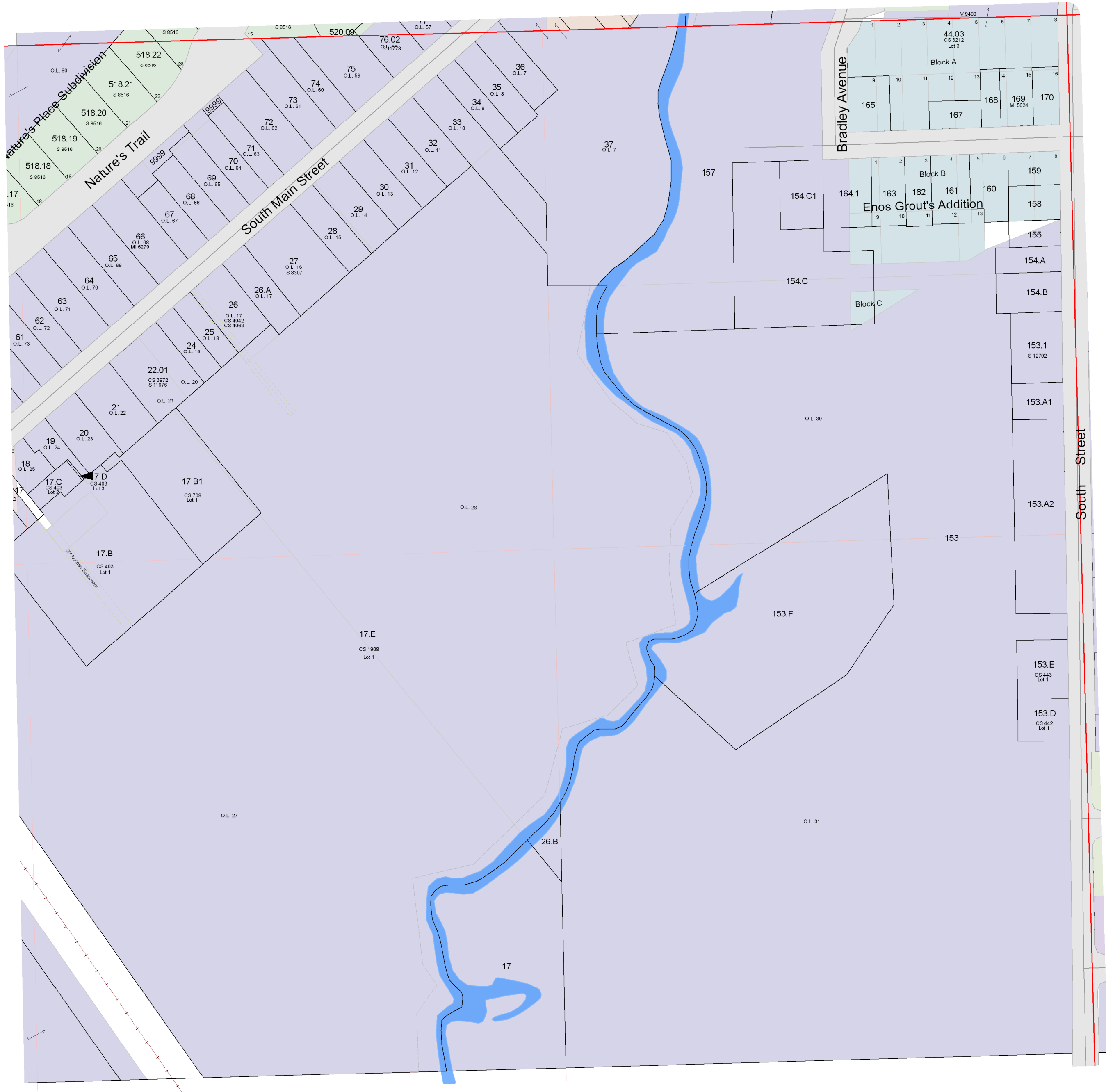
VILLAGE OF FALL RIVER

T 1 1 N R 1 2 E

1 inch = 200 feet 1:2,400



SEE VILLAGE OF FALL RIVER - Page 04



SEE VILLAGE OF FALL RIVER - Page 10

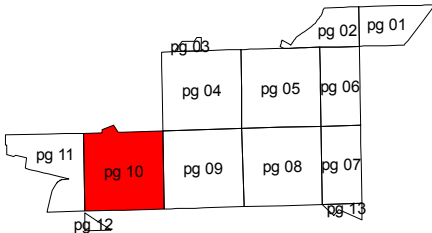
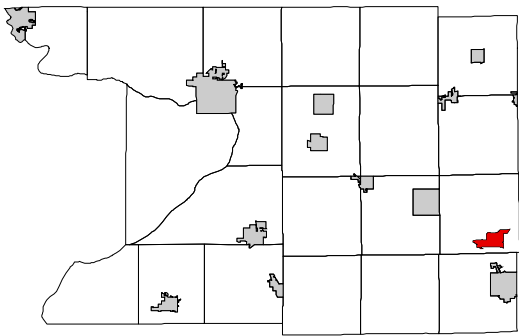
SEE VILLAGE OF FALL RIVER - Page 08

SEE TOWN OF FOUNTAIN PRAIRIE

VILLAGE OF FALL RIVER

T11N R12E

1 inch = 200 feet 1:2,400



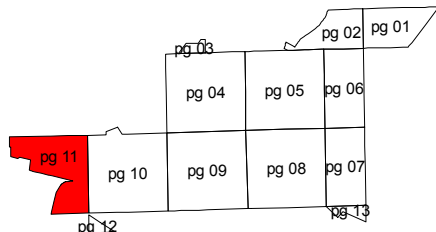
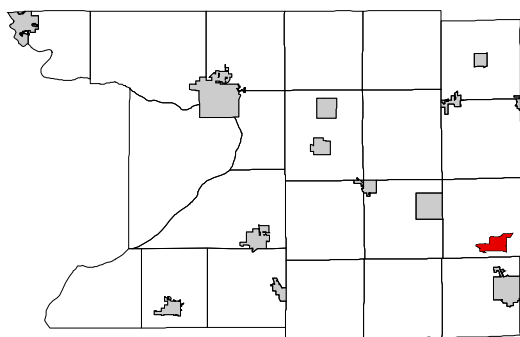
SEE TOWN OF FOUNTAIN PRAIRIE



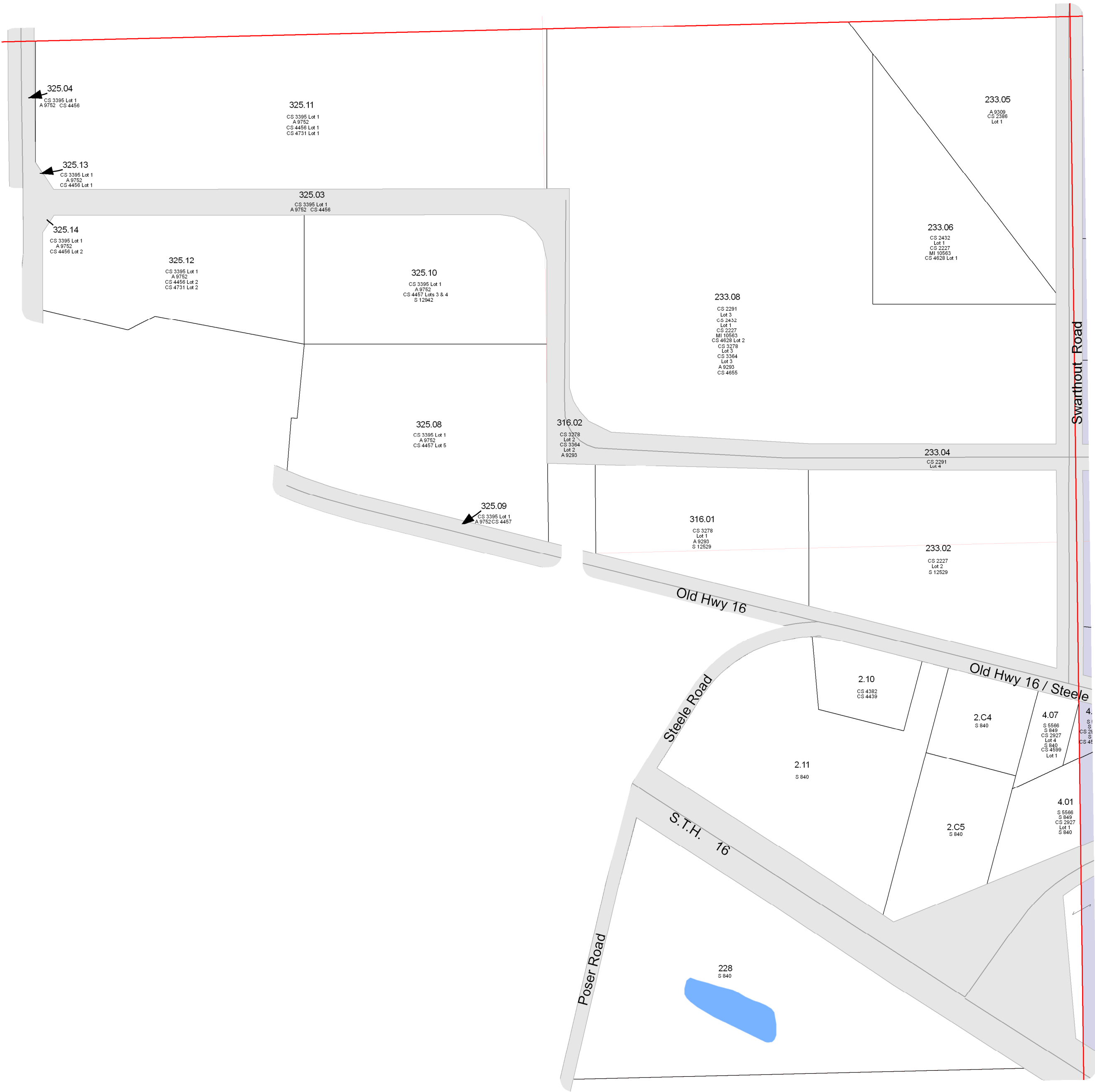
VILLAGE OF FALL RIVER

T11N R12E

1 inch = 200 feet 1:2,400



SEE TOWN OF FOUNTAIN PRAIRIE



SEE TOWN OF FOUNTAIN PRAIRIE

SEE VILLAGE OF FALL RIVER - Page 10

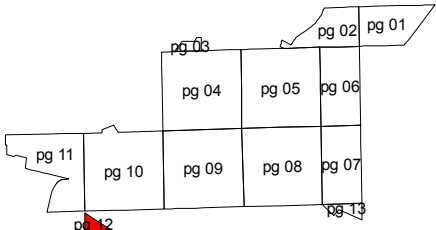
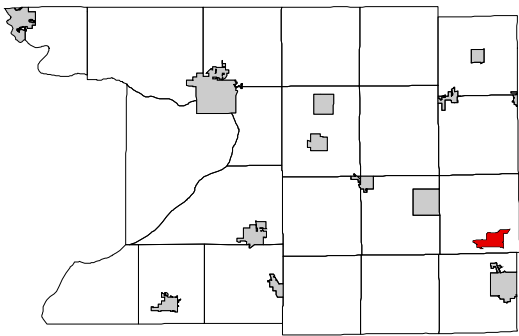
SEE TOWN OF FOUNTAIN PRAIRIE

VILLAGE OF FALL RIVER

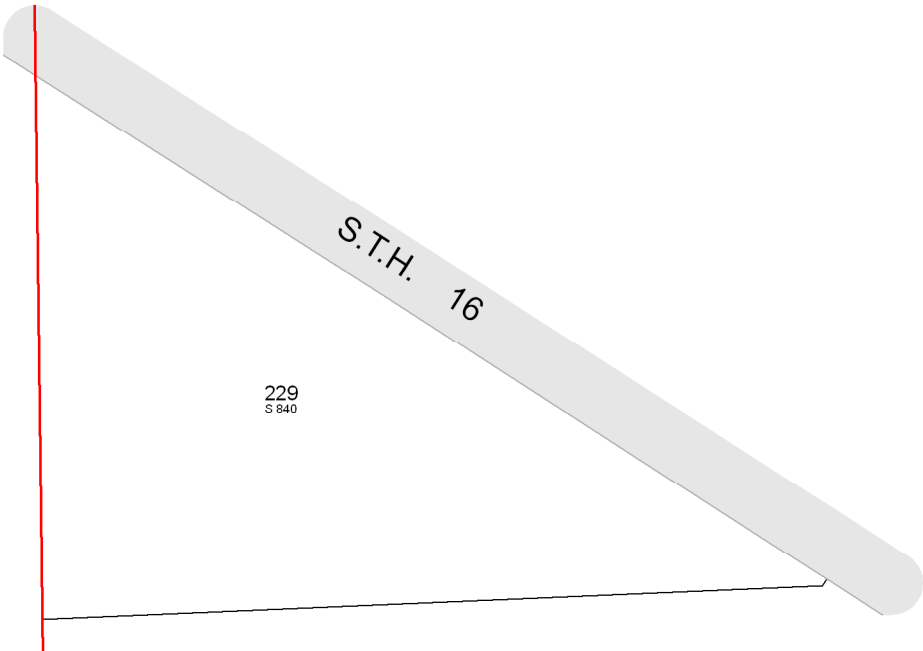
T11N R12E

1 inch = 200 feet 1:2,400

SEE TOWN OF FOUNTAIN PRAIRIE



SEE TOWN OF FOUNTAIN PRAIRIE



SEE TOWN OF FOUNTAIN PRAIRIE

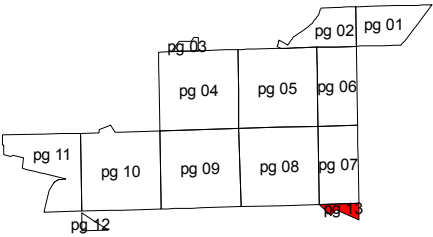
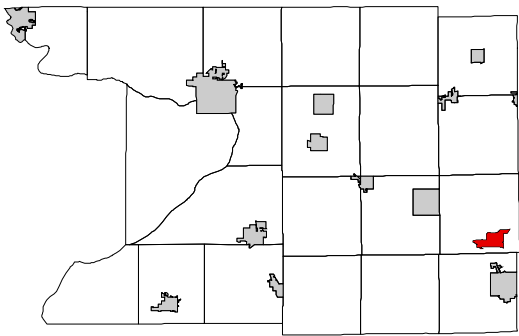
SEE TOWN OF FOUNTAIN PRAIRIE

VILLAGE OF FALL RIVER

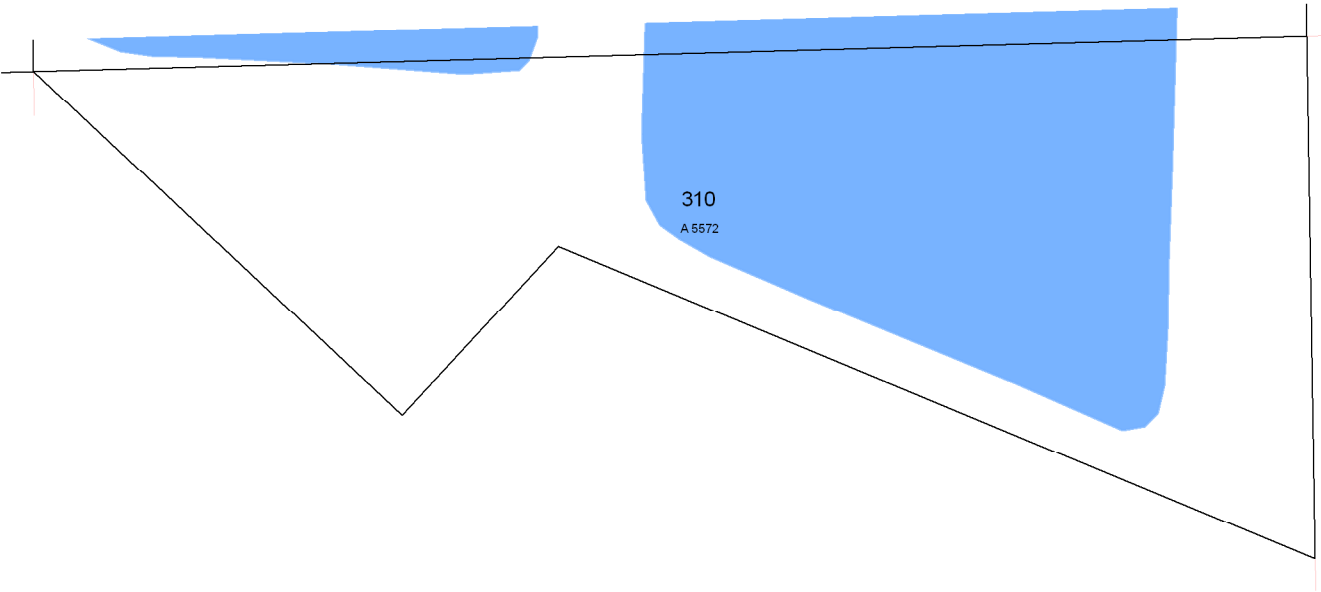
T11N R12E

1 inch = 200 feet 1:2,400

SEE VILLAGE OF FALL RIVER - Page 07



SEE TOWN OF FOUNTAIN PRAIRIE



SEE TOWN OF FOUNTAIN PRAIRIE

SEE TOWN OF FOUNTAIN PRAIRIE