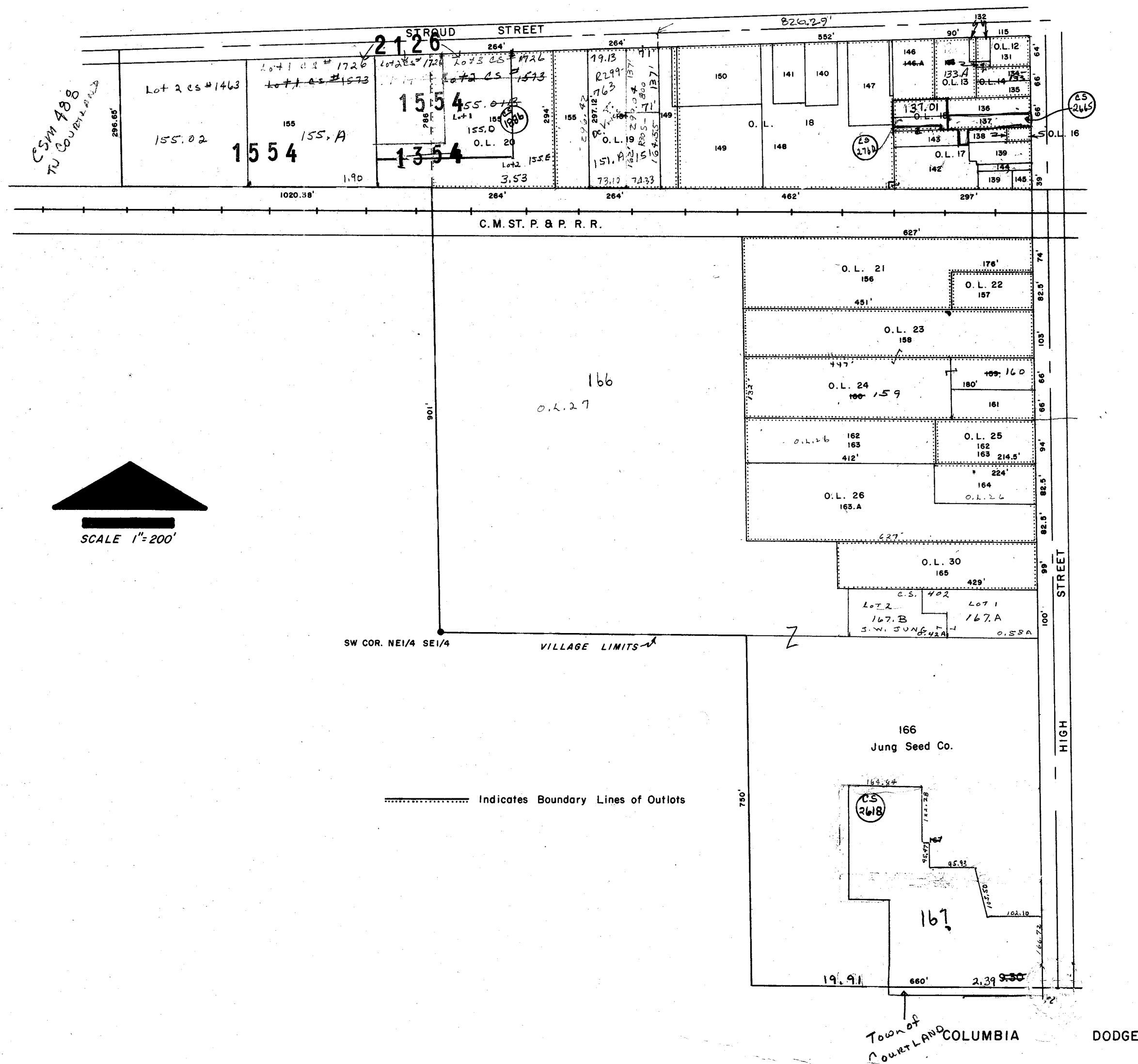


Replaced  
2003  
1118 Composite

Replaced  
2003

1118 Composite



1082

O.L. 10 - V52-102 to Methodist church  
E Sada to Methodist church V85-294  
V85534

# **ANNEXATION DESCRIPTION**

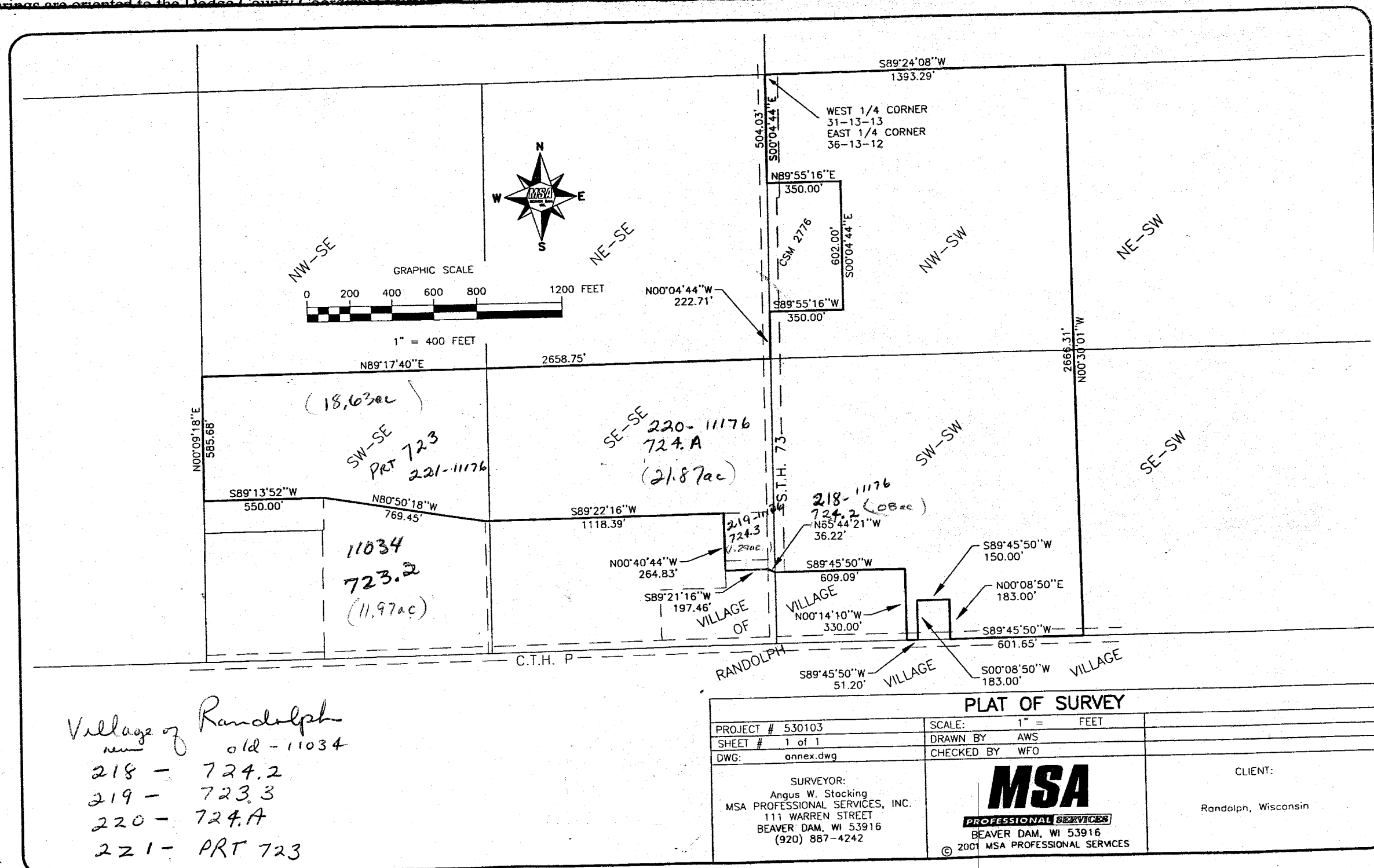
Part of the Northwest 1/4 and Southwest 1/4 of the Southwest 1/4 of Section 31, Township 13 North, Range 13 East, Town of Fox Lake, Dodge County and part of the Southwest 1/4 and Southeast 1/4 of the Southeast 1/4 of Section 36, Township 13 North, Range 12 East, Town of Randolph, Columbia County, all in Wisconsin. The parcel is more particularly described as follows:

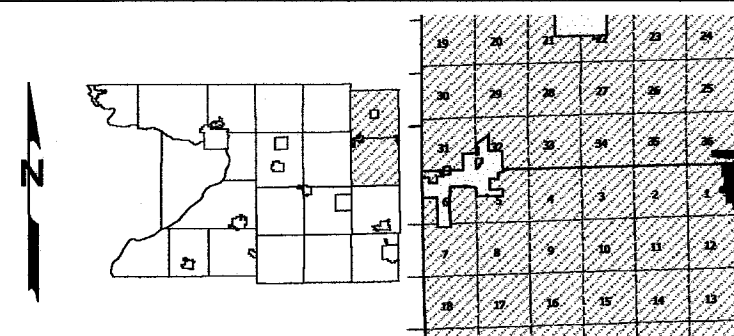
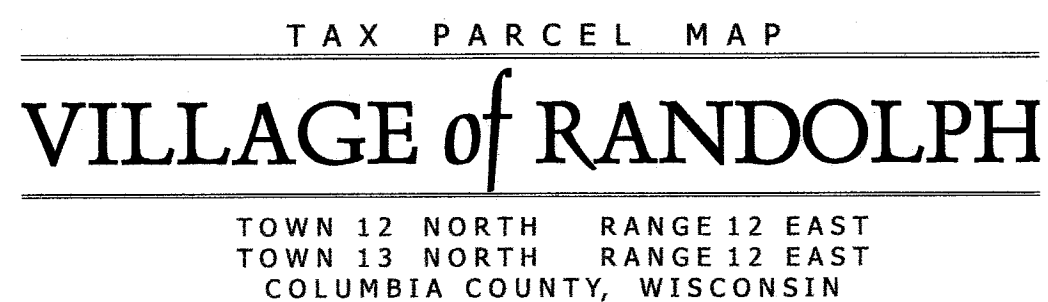
**BEGINNING** at the West 1/4 corner of said Section 31, being also the East 1/4 corner of said Section 36; thence, along the North line of the Northwest 1/4 of the Southwest 1/4 of said Section 31, N.89°24'08"E., 1,393.29 feet; thence, along the East line of the West 1/2 of the Southwest 1/4 of said Section 31, S.00°30'01"E., 2,666.31 feet to a point on the South line of the Southwest 1/4 of said Section 31 and on the centerline of C.T.H. "P" and the Northerly corporate limits of the Village of Randolph; thence, along said South line and centerline and corporate limits, S.89°45'50"W., 601.65 feet; thence, along said corporate limits, N.00°08'50"E., 183.00 feet; thence, along said corporate limits, S.89°45'50"W., 150.00 feet; thence, along said corporate limits, S.00°08'50"W., 183.00 feet to a point on said South line and centerline; thence, along said South line and centerline and corporate limits, S.89°45'50"W., 51.20 feet; thence, along said corporate limits, N.00°14'10"W., 330.00 feet; thence, along said corporate limits, S.89°45'50"W., 609.09 feet to a point on the West line of the Southwest 1/4 of the Southwest 1/4 of said Section 31, being also the East line of the Southeast 1/4 of the Southeast 1/4 of said Section 36 being also the centerline of S.T.H. 73; thence N.65°44'21"W., 36.22 feet to a point on the Westerly right-of-way of said S.T.H. 73; thence, along said corporate limits, S.89°21'16"W., 197.46 feet; thence N.00°40'44"W., 264.83 feet; thence S.89°22'16"W., 1,118.39 feet; thence N.80°50'18"W., 769.45 feet; thence S.89°13'52"W., 550.00 feet to a point on the West line of the Southwest 1/4 of the Southeast 1/4 of said Section 36; thence, along said West line N.00°09'18"E., 585.68 feet; thence, along the North line of the South 1/2 of the Southeast 1/4 of said Section 36, N.89°17'40"E., 2,658.75 to a point on the centerline of said S.T.H. 73 and East line of the Southeast 1/4 of said Section 36 and the West line of the Southwest 1/4 of said Section 31; thence, along said centerline, East line, and West line, N.00°04'44"W., 222.71 feet; thence, along the South line Lot 2 of C.S.M. No. 2776, N.89°55'16"E., 350.00 feet; thence, along the East lines of Lots 1 & 2 of said C.S.M. No. 2776, N.00°04'44"W., 602.00 feet; thence, along the North line of Lot 1 of said C.S.M. No. 2776, S.89°55'16"W., 350.00 feet to a point on the West line of the Northwest 1/4 of the Southwest 1/4 of said Section 31 and the centerline of said S.T.H. 73; thence, along said West line and centerline, N.00°04'44"W., 504.03 feet to the **POINT OF BEGINNING**.

Said parcel contains 5,142,893 square feet or 118.0646 total acres, more or less.

The bearings are oriented to the Dodge County Coordinate System.

Replaced  
2003





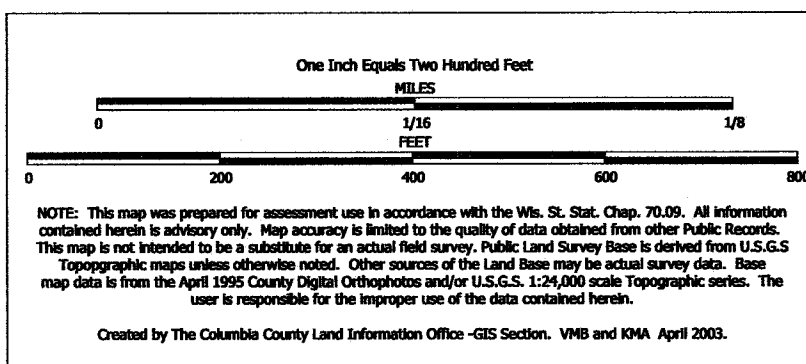
~~Replaced~~  
2004

TOWN of RANDOLPH



replaced 2004

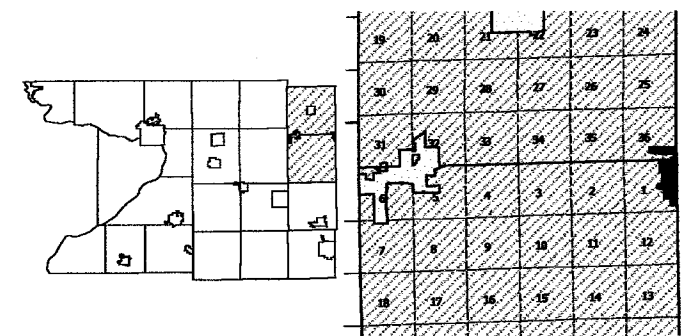




TAX PARCEL MAP

# VILLAGE of RANDOLPH

TOWN 12 NORTH RANGE 12 EAST  
TOWN 13 NORTH RANGE 12 EAST  
COLUMBIA COUNTY, WISCONSIN



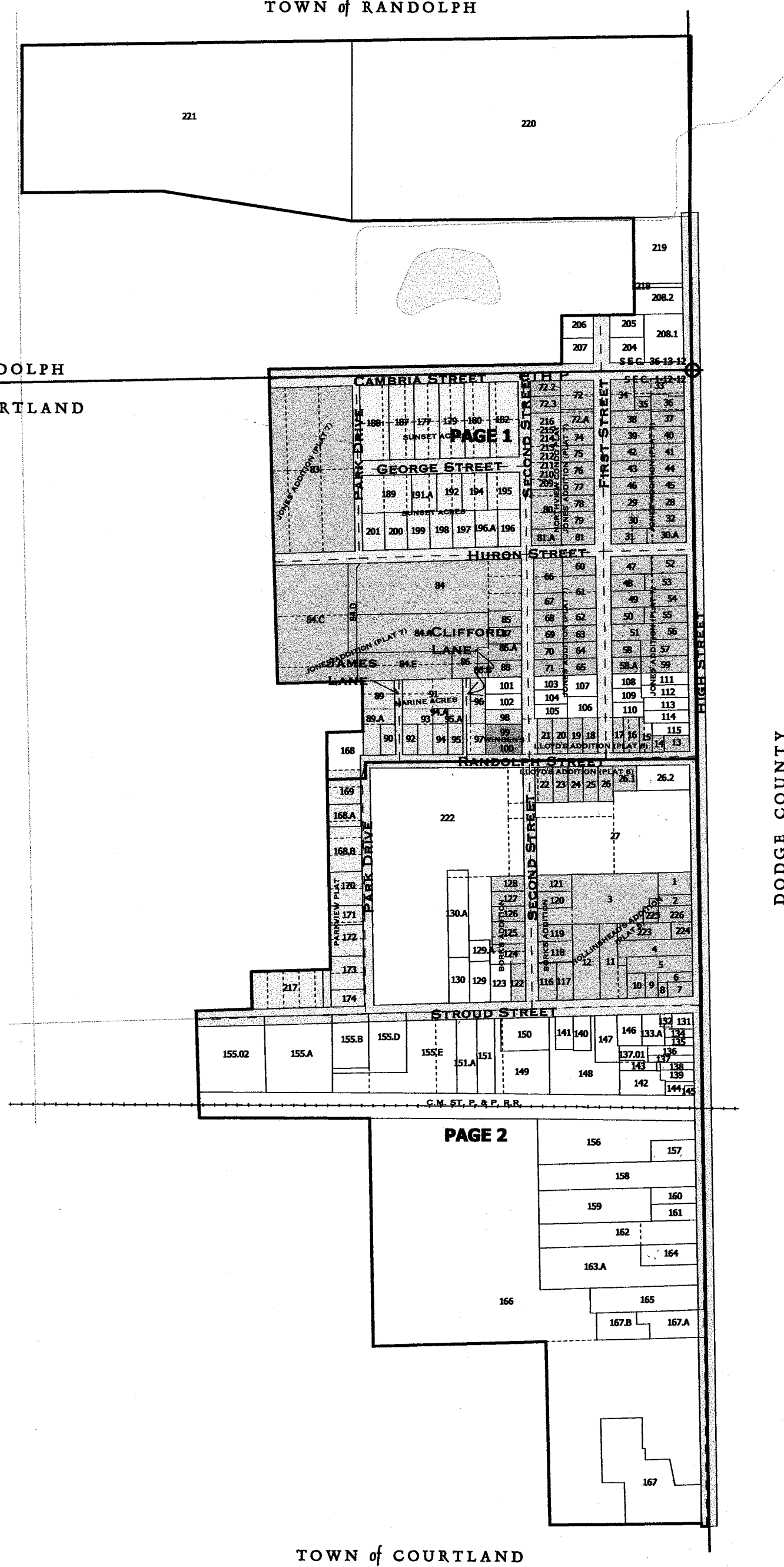
Replaced  
2005

TOWN of RANDOLPH

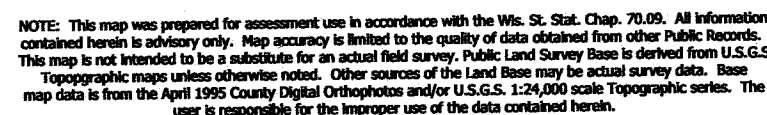
TOWN of RANDOLPH

TOWN of COURTLAND

| SURVEY INDEX                       |         |
|------------------------------------|---------|
| BORK'S ADDITION                    | S6004   |
| CHERRY LAWN                        |         |
| HOLLINSHEAD'S ADDITION (PLAT #5)   |         |
| JONES' ADDITION (PLAT #7)          |         |
| LLOYD'S ADDITION (PLAT #6)         |         |
| MARINE ACRES                       |         |
| NORTHVIEW CONDOMINIUM PLAT         | S 3490  |
| PARKVIEW PLAT                      | S 343a  |
| SUNSET ACRES                       |         |
| WINDEN'S ADDITION                  |         |
| 1891 REVISED AND CONSOLIDATED PLAT |         |
| 1920 VILLAGE MAP                   | S 11109 |
| COMPOSITE                          | S 1118  |
| COMPOSITE                          | S 1130  |
| COMPOSITE                          | S 1132  |
| VILLAGE MAP(DODGE COUNTY)          | S 1120  |
| 1961 VILLAGE BOUNDARY MAP          | S 1128  |
| 1992 CORPORATE LIMITS              | S 6003  |
| 1975 ANNEXATION                    |         |
| 1991 ANNEXATION                    | A 8125  |
| 2001 ANNEXATION                    | A 10409 |



TOWN of COURTLAND

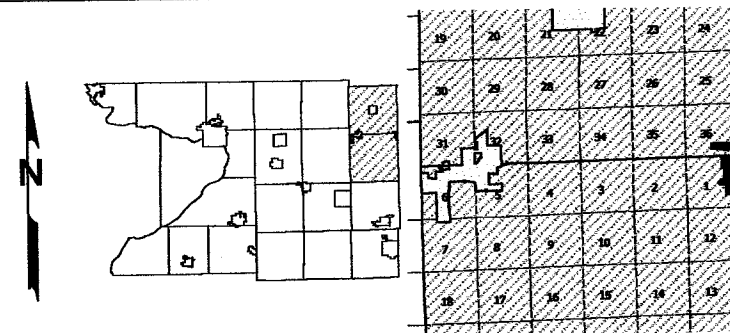


Created by The Columbia County Land Information Office -GIS Section. VMB and KMA Feb 2004

# VILLAGE of RANDOLPH

TOWN 12 NORTH RANGE 12 EAST  
TOWN 13 NORTH RANGE 12 EAST  
COLUMBIA COUNTY, WISCONSIN

~~Replaced~~  
2005



TOWN of RANDOLPH

TOWN of RANDOLPH

221

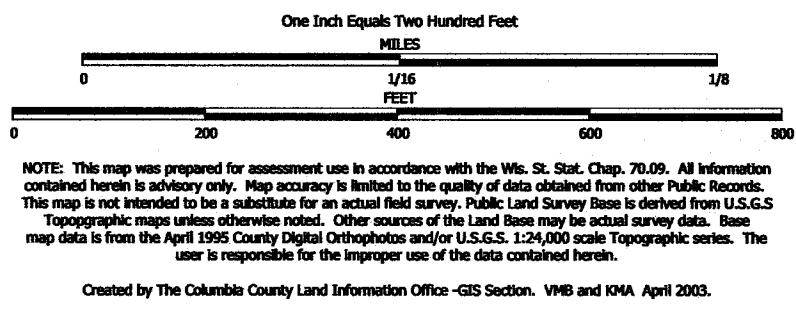
220

TOWN of RANDOLPH

TOWN of COURTLAND

TOWN of COURTLAND

**DODGE COUNTY**

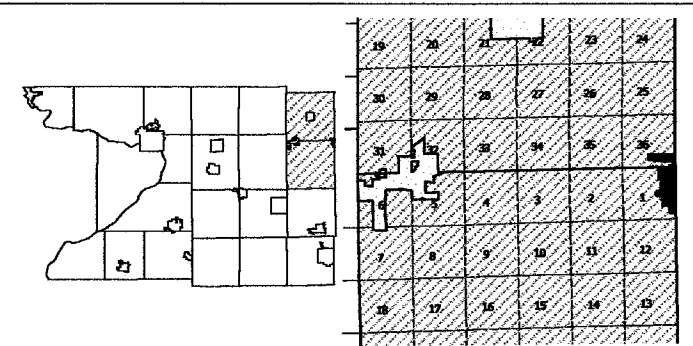


TAX PARCEL MAP

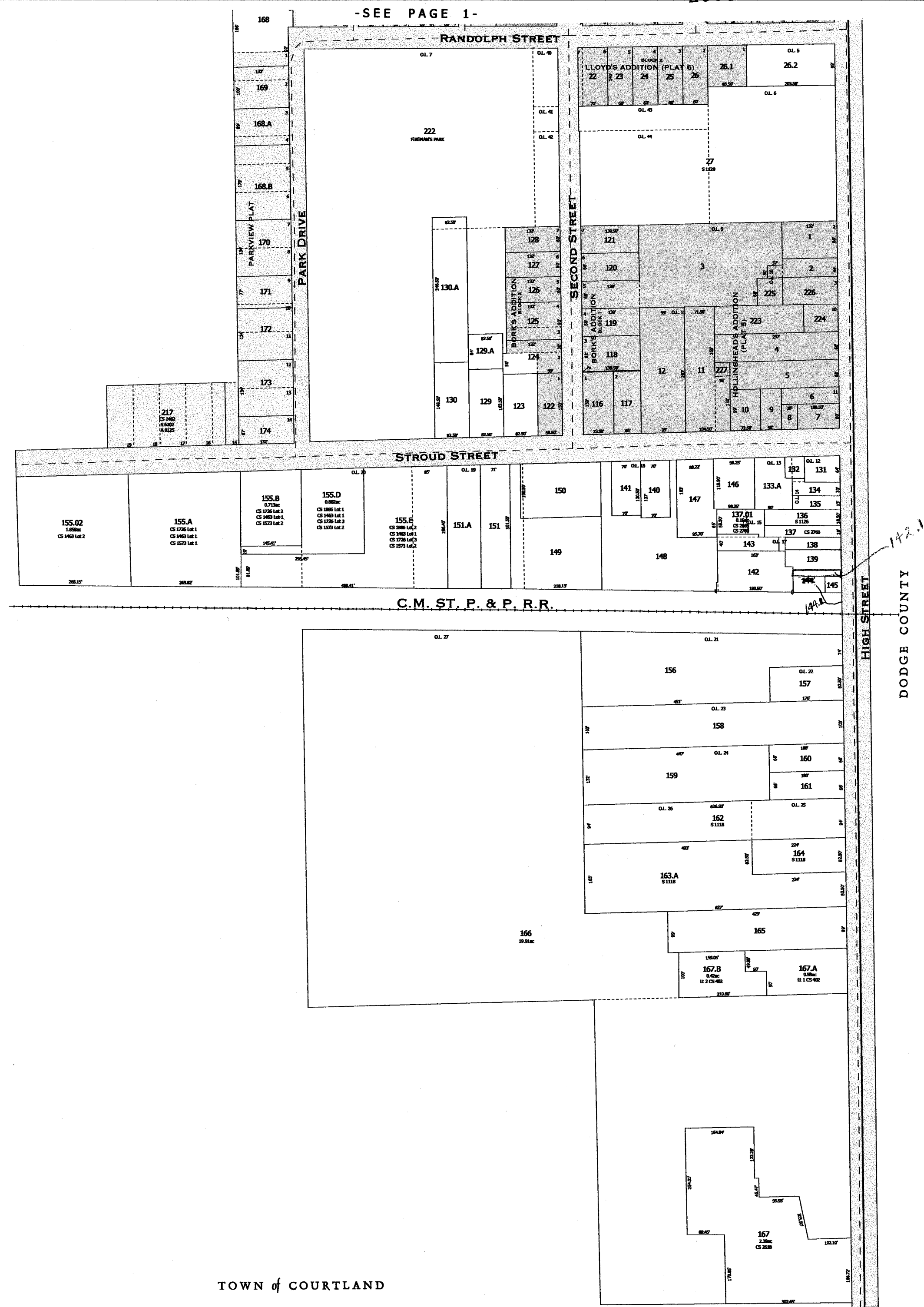
# VILLAGE of RANDOLPH

TOWN 12 NORTH RANGE 12 EAST  
TOWN 13 NORTH RANGE 12 EAST  
COLUMBIA COUNTY, WISCONSIN

Replaced  
2005

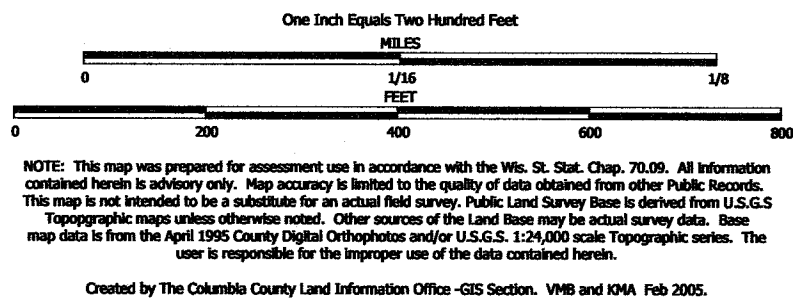


TOWN of COURTLAND



TOWN of COURTLAND

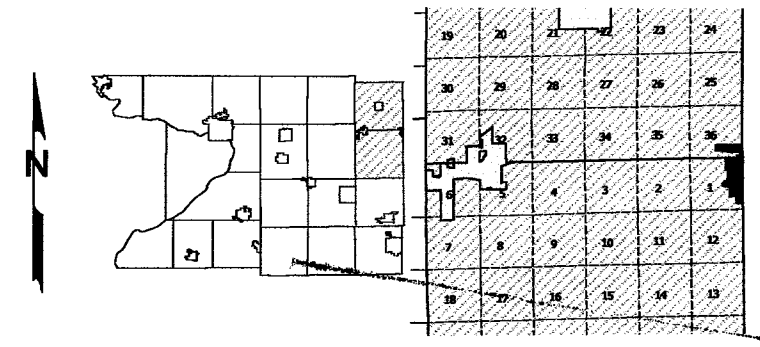




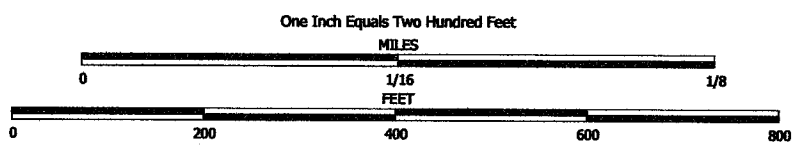
TAX PARCEL MAP

# VILLAGE of RANDOLPH

TOWN 12 NORTH RANGE 12 EAST  
TOWN 13 NORTH RANGE 12 EAST  
COLUMBIA COUNTY, WISCONSIN







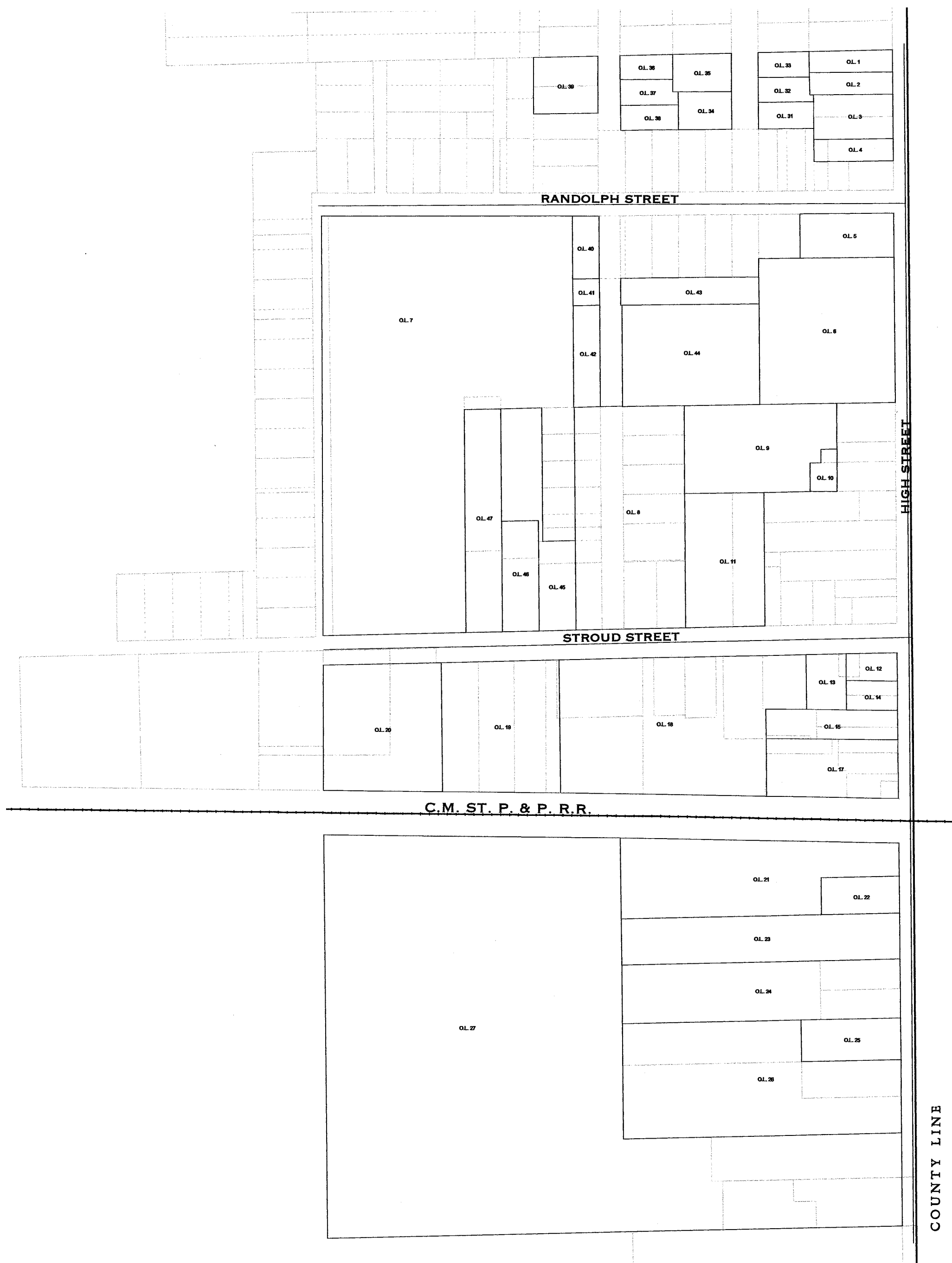
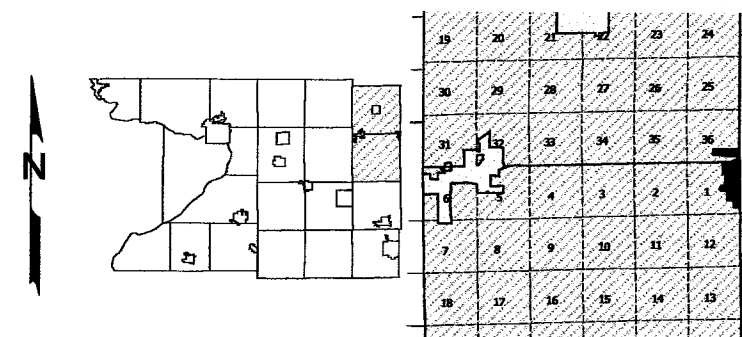
NOTE: This map was prepared for assessment use in accordance with the Wis. St. Stat. Chap. 70.09. All information contained herein is advisory only. Map accuracy is limited to the quality of data obtained from other Public Records. This map is not intended to be a substitute for an actual field survey. Public Land Survey Base is derived from U.S.G.S. Topographic maps unless otherwise noted. Other sources of the Land Base may be actual survey data. Base map data is from the April 1995 County Digital Orthophotos and/or U.S.G.S. 1:24,000 scale Topographic series. The user is responsible for the improper use of the data contained herein.

Created by The Columbia County Land Information Office -GIS Section. VMB and KMA April 2003.

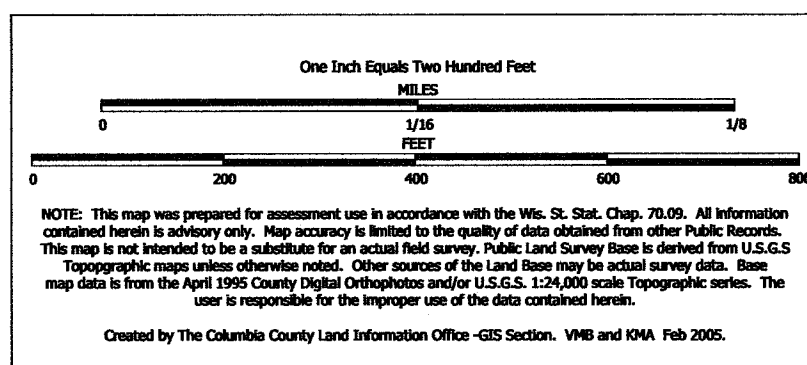
TAX PARCEL MAP

# VILLAGE of RANDOLPH

TOWN 12 NORTH RANGE 12 EAST  
TOWN 13 NORTH RANGE 12 EAST  
COLUMBIA COUNTY, WISCONSIN



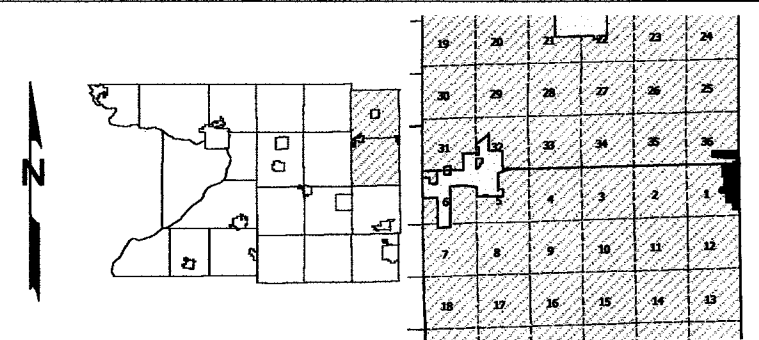
Replaced  
Replaced  
2009



TAX PARCEL MAP

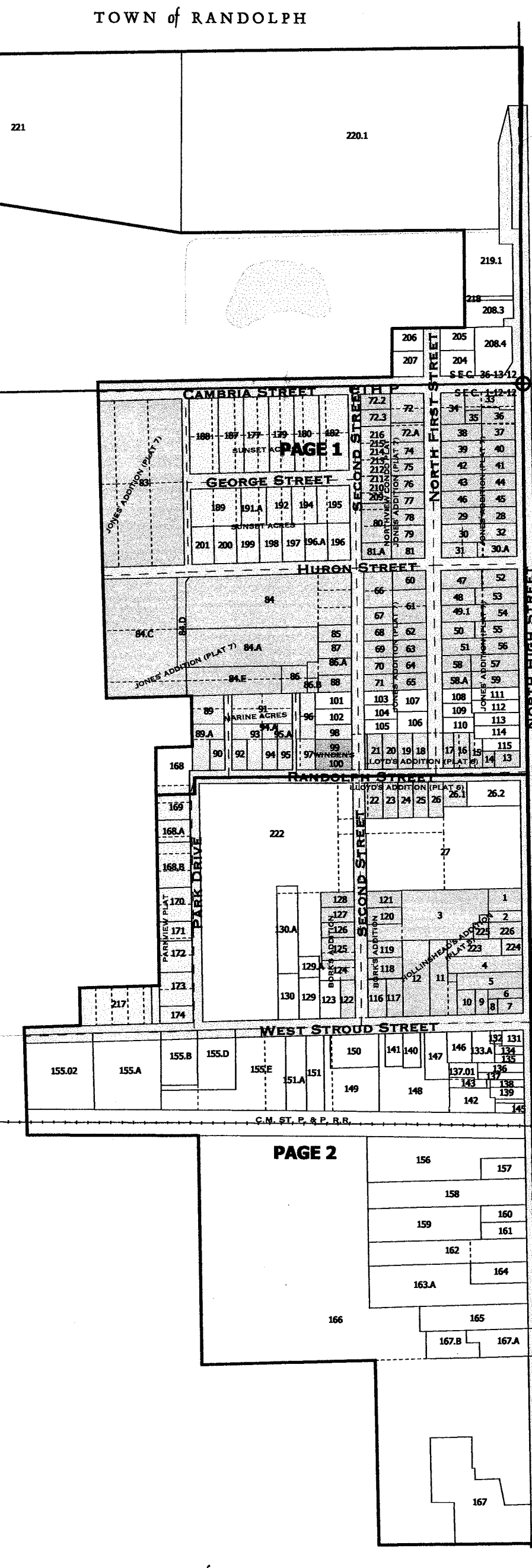
# VILLAGE of RANDOLPH

TOWN 12 NORTH RANGE 12 EAST  
TOWN 13 NORTH RANGE 12 EAST  
COLUMBIA COUNTY, WISCONSIN



TOWN of RANDOLPH

TOWN of COURTLAND

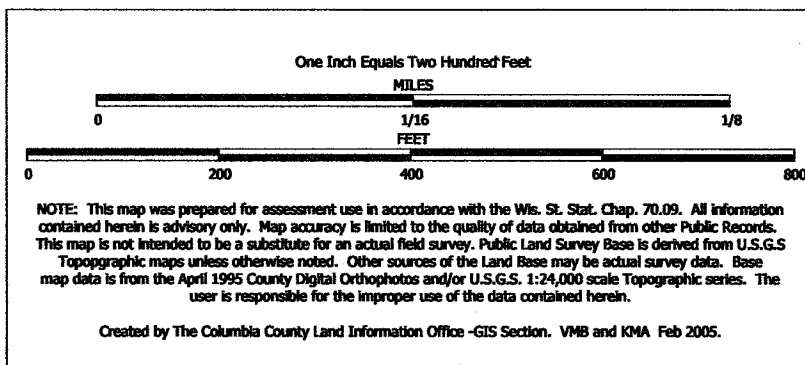


| SURVEY INDEX                       |         |
|------------------------------------|---------|
| BORK'S ADDITION                    | S6004   |
| CHERRY LAWN                        |         |
| HOLLINSHEAD'S ADDITION (PLAT #5)   |         |
| JONES' ADDITION (PLAT #7)          |         |
| LLOYD'S ADDITION (PLAT #6)         |         |
| MARINE ACRES                       |         |
| NORTHVIEW CONDOMINIUM PLAT         | S 3490  |
| PARKVIEW PLAT                      | S 343a  |
| SUNSET ACRES                       |         |
| WINDEN'S ADDITION                  |         |
| 1891 REVISED AND CONSOLIDATED PLAT |         |
| 1920 VILLAGE MAP                   | S 11109 |
| COMPOSITE                          | S 1118  |
| COMPOSITE                          | S 1130  |
| COMPOSITE                          | S 1132  |
| VILLAGE MAP(DODGE COUNTY)          | S 1120  |
| 1961 VILLAGE BOUNDARY MAP          | S 1128  |
| 1992 CORPORATE LIMITS              | S 6003  |
| 1975 ANNEXATION                    | A 7317  |
| 1991 ANNEXATION                    | A 8125  |
| 2001 ANNEXATION                    | A 10409 |

Replaced  
Replaced  
2009

DODGE COUNTY

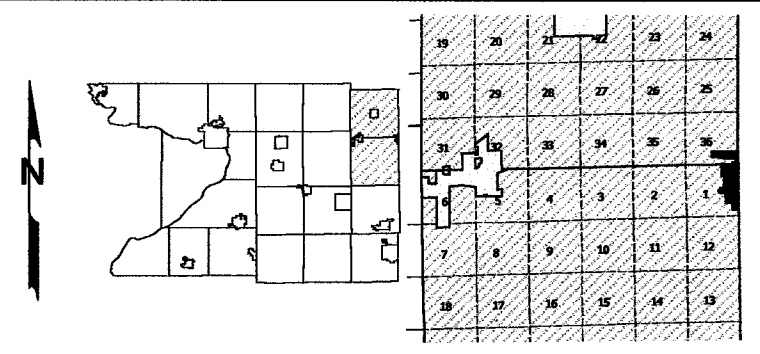
TOWN of COURTLAND



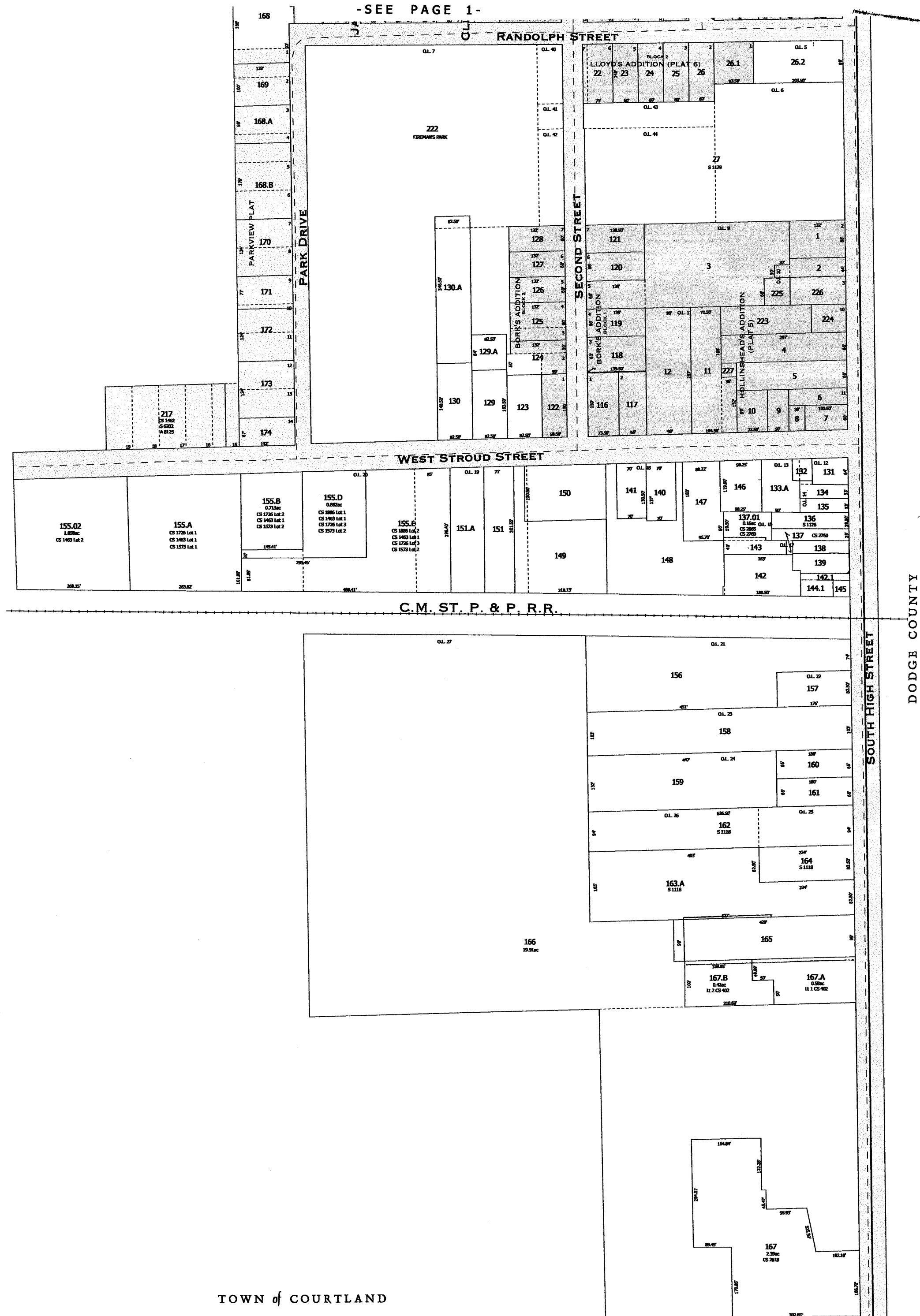
TAX PARCEL MAP

# VILLAGE of RANDOLPH

TOWN 12 NORTH RANGE 12 EAST  
TOWN 13 NORTH RANGE 12 EAST  
COLUMBIA COUNTY, WISCONSIN



TOWN of COURTLAND



Replaced  
2009

TOWN of COURTLAND

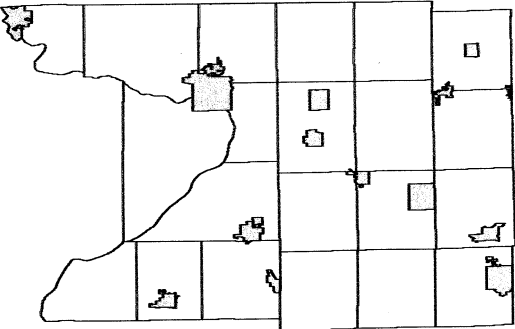


VILLAGE OF RANDOLPH

T13N R12E

1 inch = 200 feet 1:2,400

SEE TOWN OF RANDOLPH



pg 02

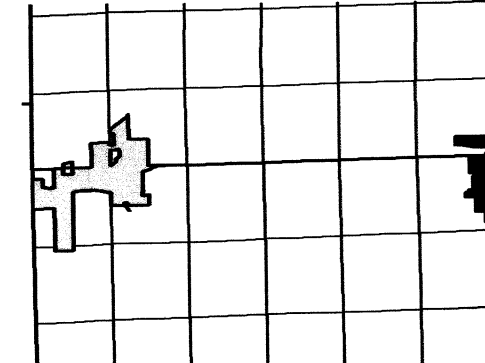
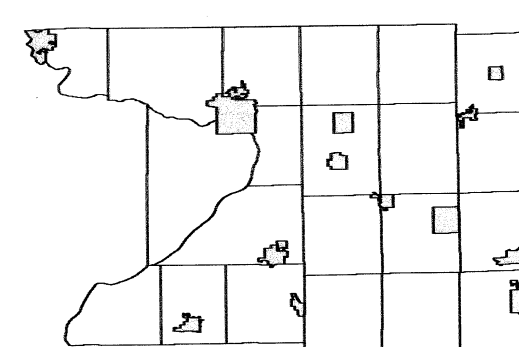
SEE TOWN OF COURTLAND

DODGE COUNTY



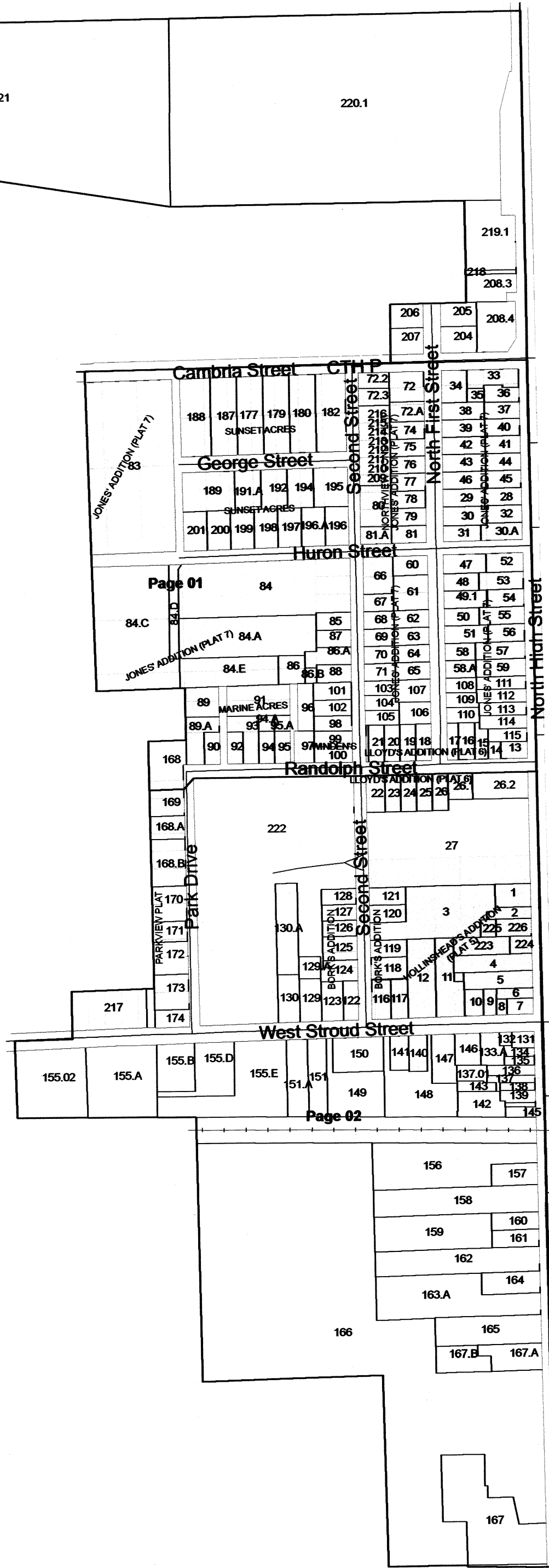
VILLAGE OF RANDOLPH  
T13N R12E

SEE TOWN OF RANDOLPH



SEE TOWN OF COURTLAND

DODGE COUNTY



# VILLAGE OF RANDOLPH

T13N R12E

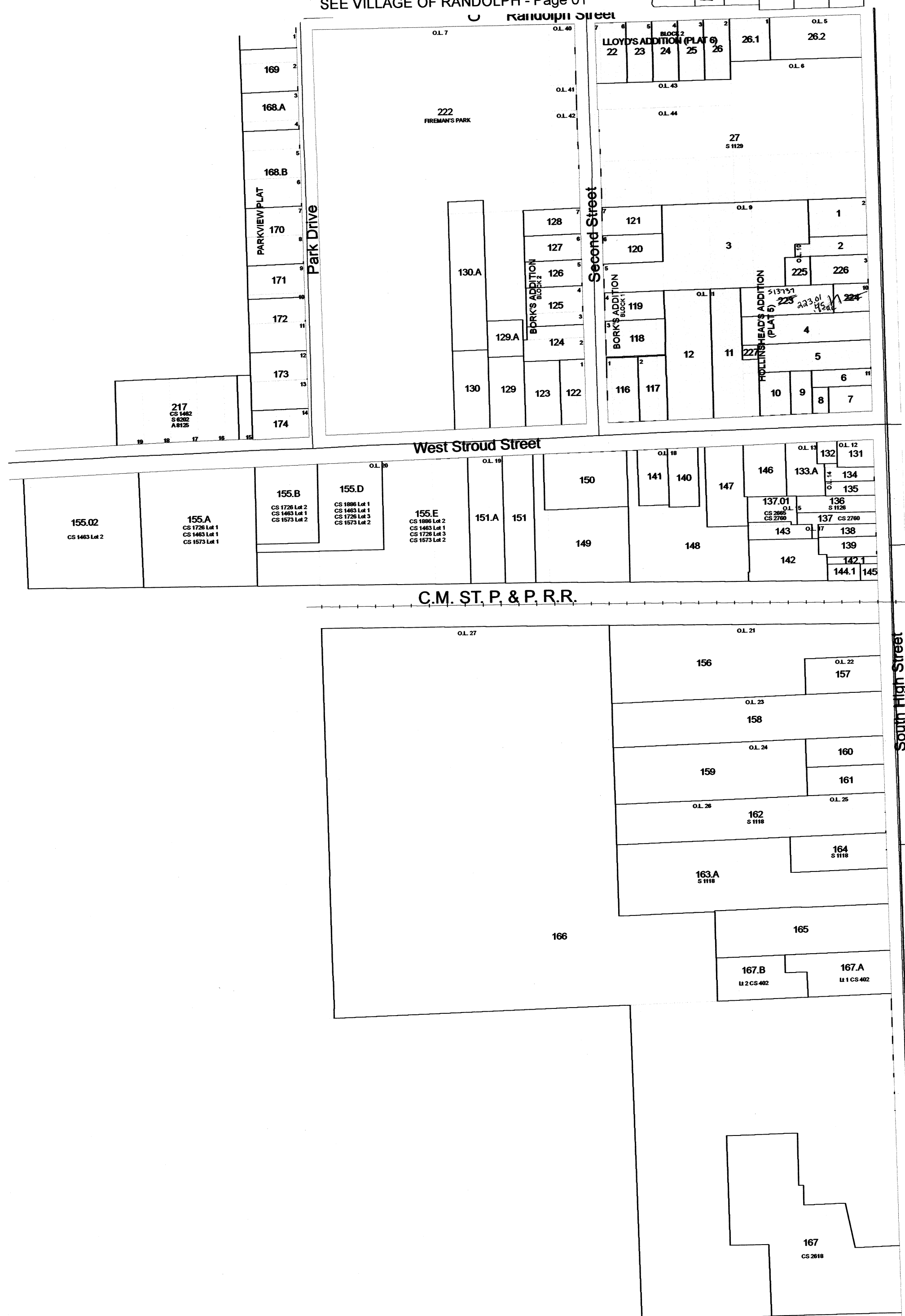
1 inch = 200 feet 1:2,400

pg 01

SEE VILLAGE OF RANDOLPH - Page 01

SEE TOWN OF COURTLAND

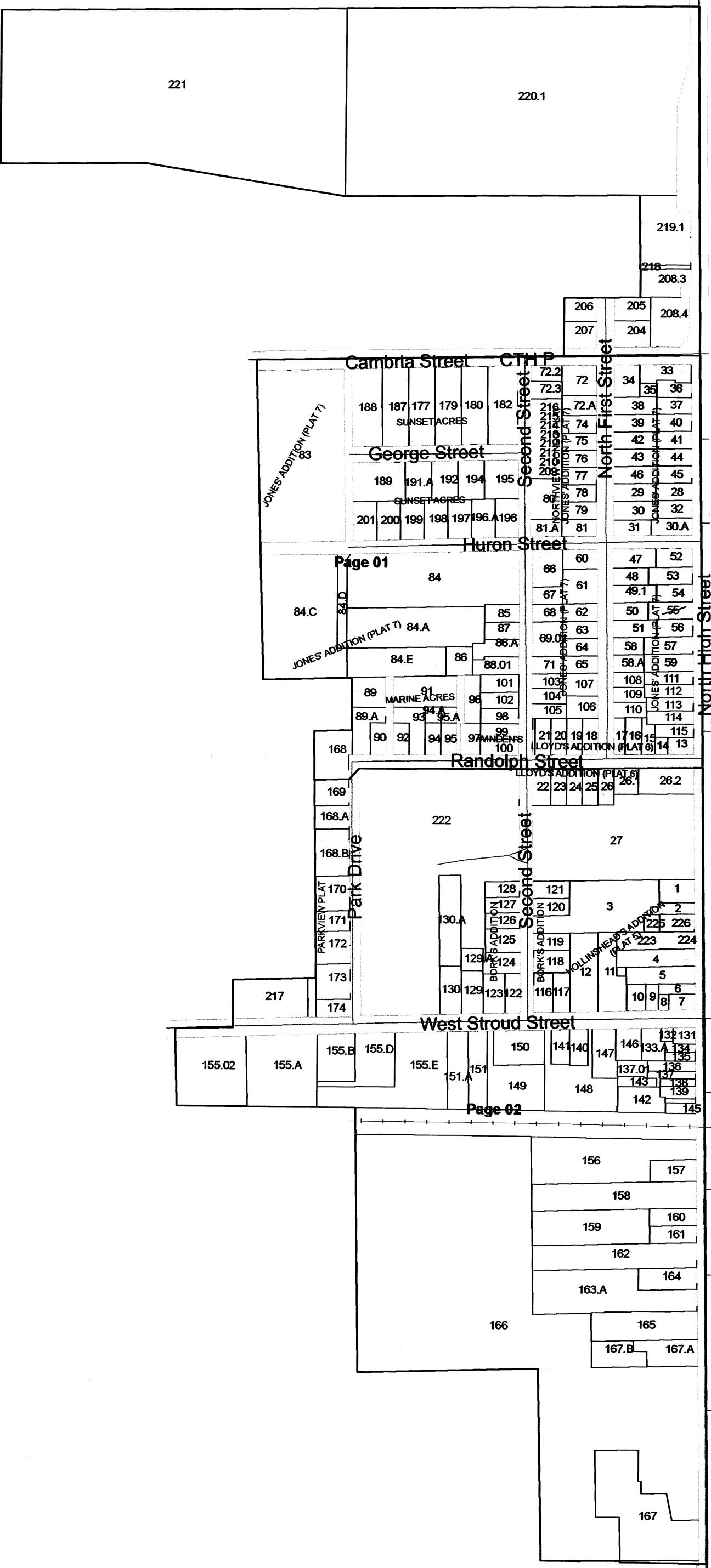
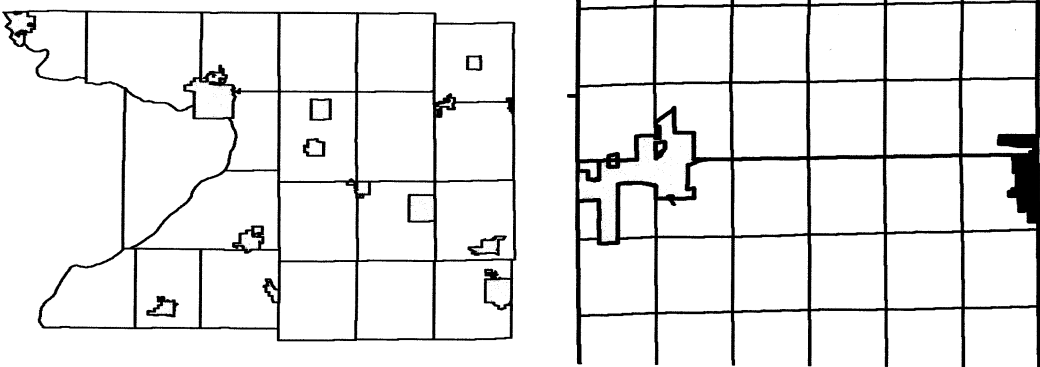
DODGE COUNTY





VILLAGE OF RANDOLPH  
T13N R12E 4 T12N R12E

SEE TOWN OF RANDOLPH



T13N R12E

T12N R12E

SEE TOWN OF COURTLAND

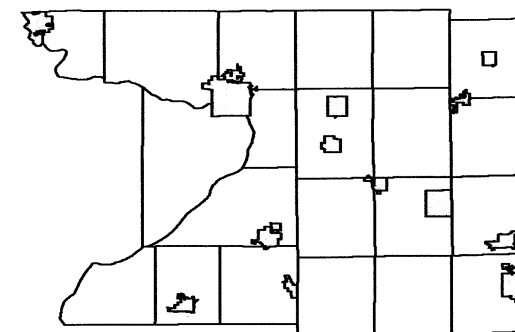
DODGE COUNTY

# VILLAGE OF RANDOLPH

T13N R12E

1 inch = 200 feet 1:2,400

SEE TOWN OF RANDOLPH



pg 02

SEE TOWN OF COURTLAND

DODGE COUNTY

T12N R12E

55.02  
.004 ac

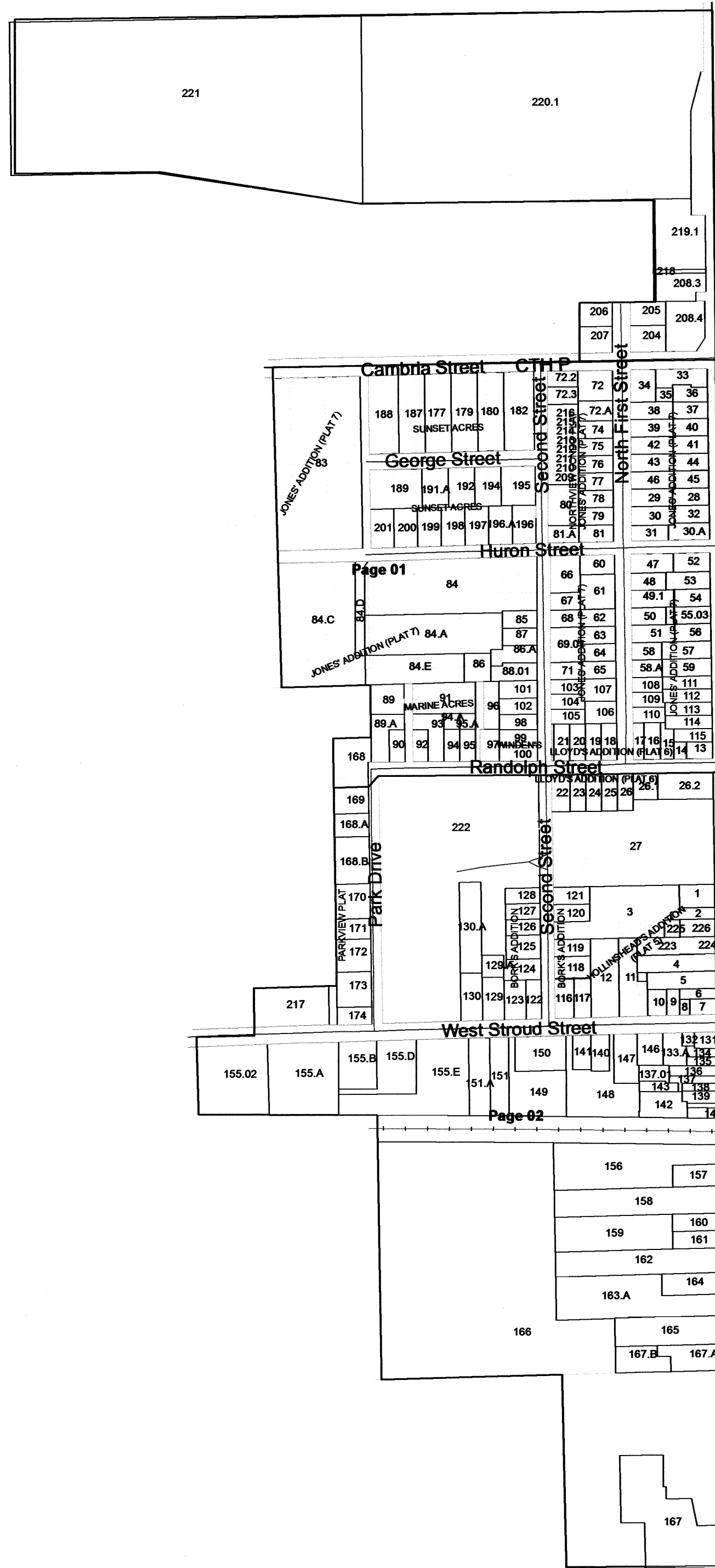
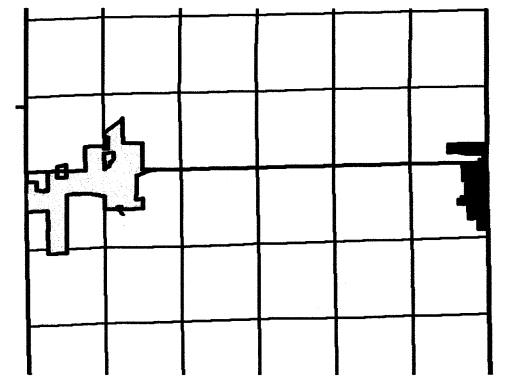
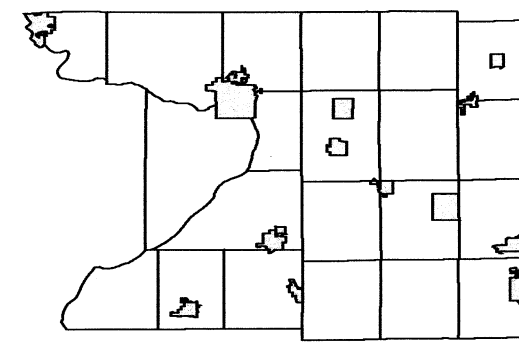
55.01  
.045 ac

Replaced  
2011

# VILLAGE OF RANDOLPH

T12N R12E

SEE TOWN OF RANDOLPH



SEE TOWN OF COURTLAND

DODGE COUNTY

REPLACED  
2014



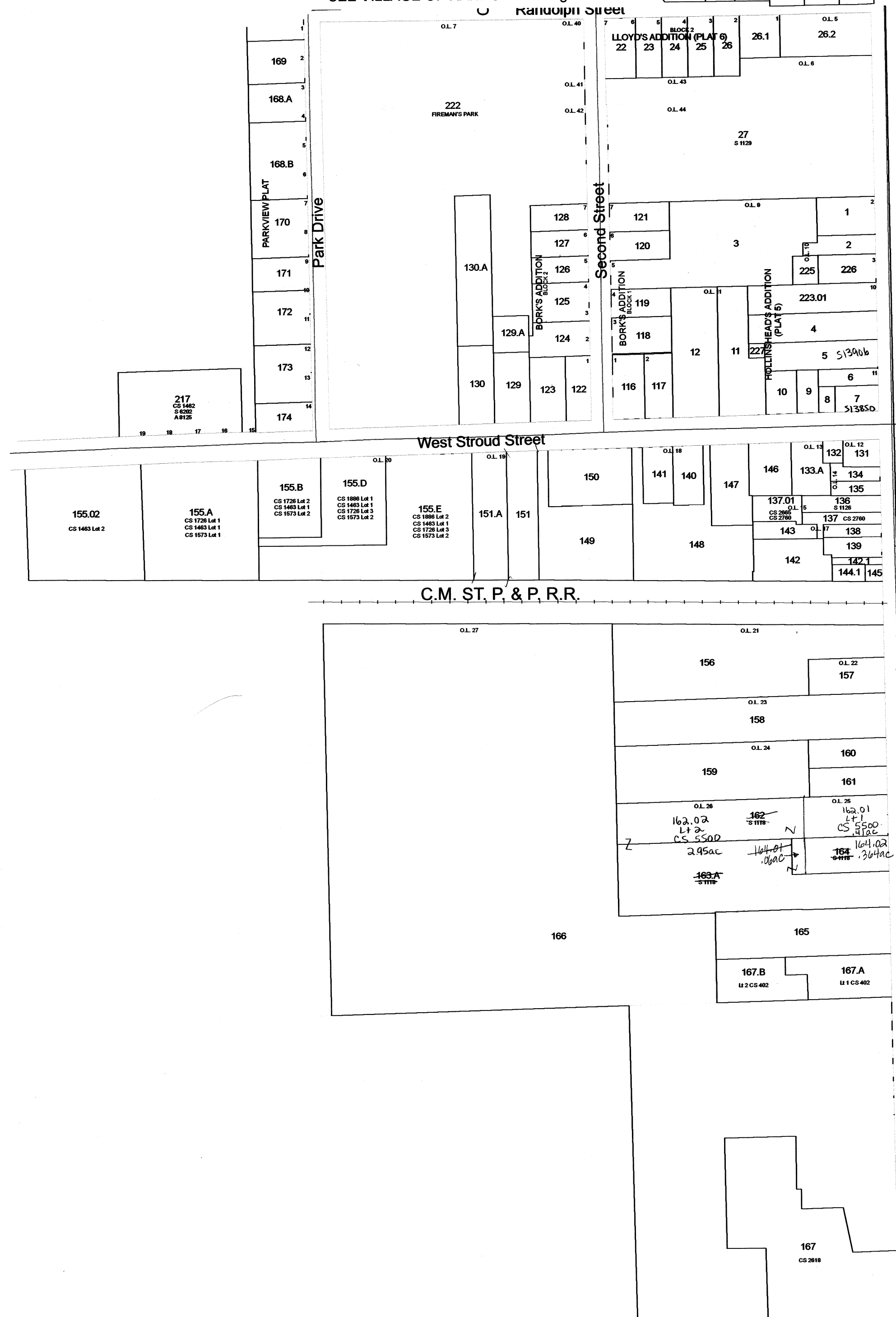
# VILLAGE OF RANDOLPH

T12N T13N R12E

1 inch = 200 feet 1:2,400

pg 01

SEE VILLAGE OF RANDOLPH - Page 01



SEE TOWN OF COURTLAND

DODGE COUNTY

REPLACED  
2014